



# Where Vibrant Living Flourishes, Experience New Wonders and Meaningful Memories

Be inspired and enriched at Hillhaven.  
From cherished celebrations with dear  
ones to moments of self-discovery, a  
world of experiences awaits.

**Experience Vibrant Living.**



Jointly developed by Sekisui House and Far East Organization, Hillhaven is a residential property developed at Hillview Rise with 341 units offering 2- to 4-bedroom residences in two towers of 27 and 28 floors.

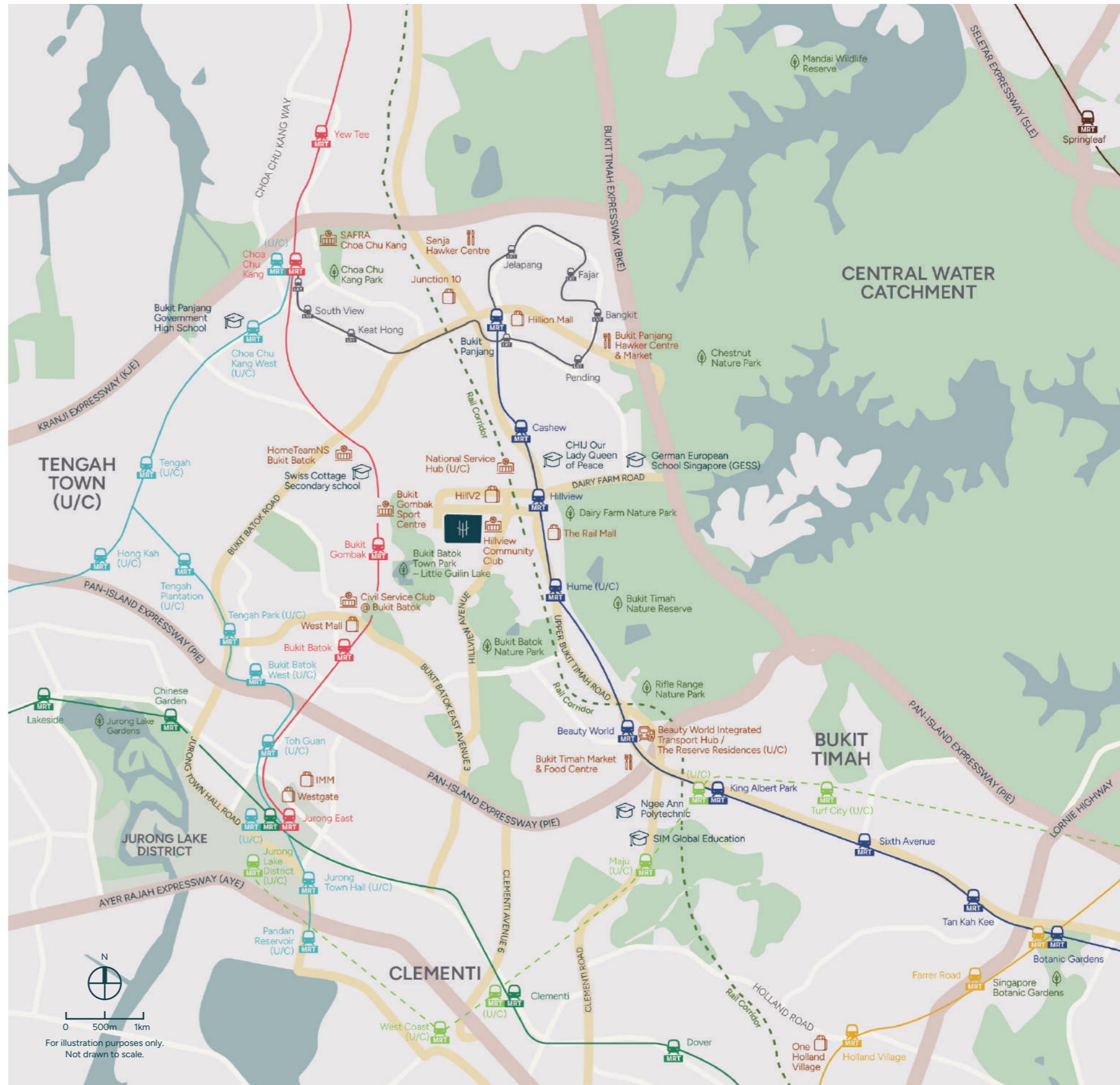


# Enjoy Modern Comfort while Staying Accessible

At Hillhaven, you are surrounded by a variety of malls, recreational spaces, and parks, with plenty to enjoy. Well-connected by road and public transport, with 2 Integrated Transport Hubs – at Beauty World and Bukit Panjang within the vicinity, Hillhaven provides quick and convenient access to a growing network of businesses and several well-reputed educational institutes.

 Nature	24km Rail Corridor Bukit Batok Nature Park Bukit Timah Nature Reserve Singapore Botanic Gardens	2 mins cycle / 4 mins walk 5 mins cycle / 4 mins drive 12 mins cycle / 6 mins drive 27 mins cycle / 15 mins drive
 Education	Schools within 1km radius CHIJ Our Lady Queen of Peace Other reputable schools nearby Brighton Montessori @ Hillview St Francis Methodist School Swiss Cottage Secondary School Ngee Ann Polytechnic SIM Global Education Bukit Panjang Government High School National University of Singapore	within 1km radius  1 min walk 6 mins walk 6 mins drive 8 mins drive 8 mins drive 10 mins drive 14 mins drive
 Shop & Dine	HillV2 The Rail Mall Hillion Mall Bukit Panjang Hawker Centre and Market Bukit Timah Market & Food Centre IMM One Holland Village	1 min walk 10 mins walk 6 mins drive 6 mins drive 7 mins drive 8 mins drive 15 mins drive
 Leisure	Hillview Community Club National Service (NS) Hub (U/C) Bukit Gombak Sports & Recreation Centre Civil Service Club @ Bukit Batok HomeTeamNS Bukit Batok SAFRA Choa Chu Kang	1 min walk 2 mins drive 5 mins drive 5 mins drive 7 mins drive 8 mins drive
 Transport	Hillview MRT Station Bukit Batok MRT Station Bukit Panjang Integrated Transport Hub Beauty World Integrated Transport Hub / The Reserve Residences (U/C)	4 mins walk 5 mins drive 2 MRT stops 2 MRT stops

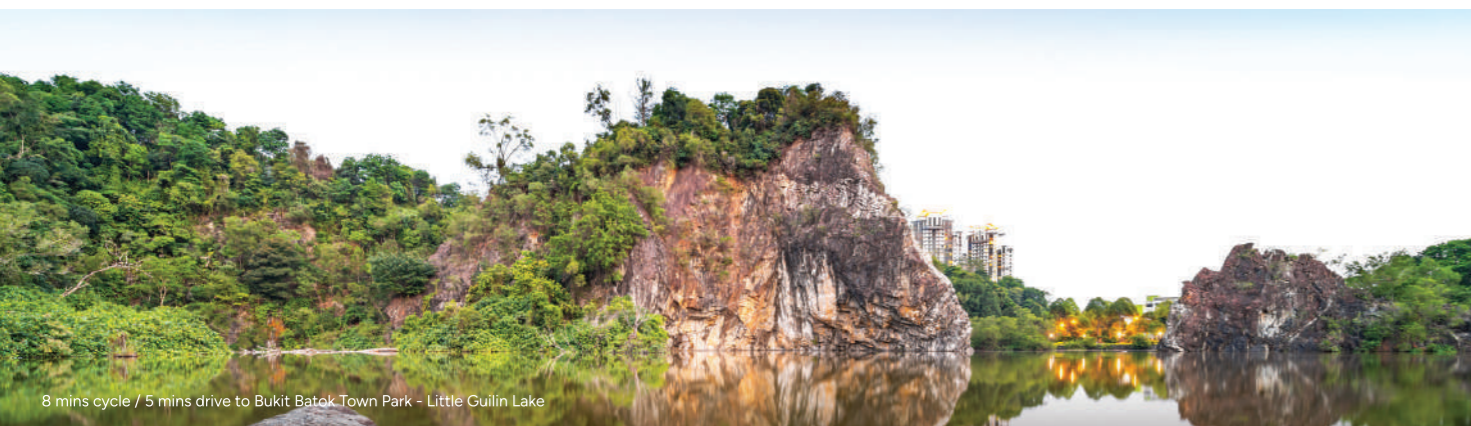
All travelling time is approximate only and is taken from Hillhaven to the respective destinations.



0 500m 1km  
 For illustration purposes only. Not drawn to scale.



# A Thriving Community to Call Home



Be a part of a vibrant community and create meaningful experiences at Hillview.



Anticipate the upcoming improvements to the Hillview area as part of the \$75-million enhancement plan, which is set to improve connectivity and elevate community spaces.

Located just minutes away, the upcoming National Service (NS) Hub will be a one-stop facility to fulfil the needs of the NS community. It is not just a space for national servicemen but also a place to relax with family and friends. For live entertainment, watch your favourite DJs perform on air at the Power 98 Love Songs and 88.3JIA radio stations. Enjoy other amenities such as new F&B outlets, a childcare centre, and an outdoor community area all under one roof.



Experience picturesque views from the new observation deck along the Rail Corridor, easily accessible via new entry points from Hillview Road.

Improved walkways and roads, including wider footpaths and new arterial routes enhance accessibility for pedestrians, while widened roads along Hillview Avenue and the new link road to Upper Bukit Timah Road benefit motorists with better traffic flow.





For illustration purposes only. All travelling time is approximate and taken from Hillhaven to the respective destinations.



# Experience New Adventures

Inspired by the Bukit Timah Nature Reserve and surrounding nature parks, the design captures an abstraction of the beauty of the tropical rainforest. Every architectural element has been inspired by a different aspect of nature.



Artist's Impression

Enter a space that inspires new adventures every day. Be greeted by the warmth of sunlight seeping through the canopy over the arrival court.



Artist's Impression | Arrival Court





# Thoughtfully Curated Amenities to Elevate Contemporary Lifestyle Needs

## Level 01

- 01 Main Entrance
- 02 Arrival Court
- 03 Tropical Palm Garden
- 04 Garden Pavilion
- 05 Exercise Lawn
- 06 Lobby Garden
- 07 Urban Farm
- 08 Ginger Garden
- 09 Garden Walk
- 10 Garden Alcove
- 11 Bikers' Corner
- 12 Bicycle Parking
- 13 Central Lawn
- 14 Side Entrance

- A Guard House - Level 01
- B Refuse Chamber - Level 01
- C MDF Room - Level 01
- D Bin Centre - Level 01
- E Substation - Level 01
- F Generator Set - Level 01
- G Water Tanks - MSCP Lower 01 (Dotted Lines)
- Water Tanks - Tower Blocks Roof (Dotted Lines)

## Level 04

- 15 BBQ Pavilion 1
- 16 BBQ Pavilion 2
- 17 50m Pool
- 18 Outdoor Fitness
- 19 Pool Deck
- 20 Gym
- 21 Rock Climbing
- 22 Kids Pool
- 23 Children Playground
- 24 Pickleball Court
- 25 Changing & Steam Room
- 26 Function Room
- 27 Spa Tub
- 28 Spa Alcove
- 29 Lounge Deck
- 30 Floating Deck
- 31 AI Fresco Deck
- 32 Water Deck
- 33 Party Pavilion
- 34 Reading Corner

## UNIT PLAN

- 2-Bedroom
- 2-Bedroom + Study
- 3-Bedroom
- 3-Bedroom + Study
- 4-Bedroom





# Turn Everyday Life into a Canvas of Treasured Memories

At Hillhaven, you will enjoy opportunities for enrichment. Whether you're seeking dynamic outdoor adventures like biking or prefer the tranquillity of community gardening, Hillhaven gives you room for constant growth and learning.



Artist's Impression | 50m Pool @ Level 04

Step out of the urban hustle and come home to a relaxing swim in the 50m pool or spray down your bicycle at the bikers' corner after a satisfying adventure through the 20km Western Adventure Cycling Loop. Find a space that nurtures the mind, body, and soul.



Artist's Impression | Urban Farm @ Level 01

# A Smart Home for an Effortless Lifestyle



Fitted with Küche Smart Collection appliances\*, enjoy the latest smart technologies to ensure a seamless living experience.



Each unit features a Küche cooker hood and hob, and a built-in oven with smart features.



With smart features like a remote turn-off, remote speed control and timer settings controlled through the iAppliances app, have complete control over your kitchen even when you're away.

Embrace the convenience of technology blended with the comforts of home.



Lighting Control



Aircon Control



Digital Lockset



Smart Gas Water Heater

\*Subject to market availability and selection at the sole discretion of the developer.



# Picture Perfect Views Every Morning\*



Artist's Impression | 4-Bedroom

\*View from selected units. Images are for illustration purposes only.

Embrace the beauty of unblocked living and enjoy expansive panoramic views.

Picture waking up to the soft hues of sunrise from your master bedroom through captivating L-shaped windows, or unwinding in the evening with views of breathtaking sunsets right from your balcony.



Artist's Impression | 3-Bedroom



## Efficient Layouts for Optimal Space Utilisation

### 2-Bedroom Residences

Hillhaven's 2-bedroom and 2-bedroom + study layouts are well-suited for individuals or small families.

Every 2-bedroom + study unit comes with an enclosed kitchen with natural ventilation and a smart gas hob connected to the iAppliances app. Enjoy extended living space seamlessly connecting to your balcony, offering indoor comfort and outdoor relaxation.



Artist's Impression | 2-Bedroom + Study

## Designed for the Family

### 3-Bedroom Residences

With a choice of four layouts, the 3-bedroom units offer spacious and elegant homes ideal for larger families.

Each layout has been meticulously designed to create the most efficient home, ensuring you get the very best use of space. Transform the attached study room into your own dedicated hobby area or a convenient home office, allowing you to pursue your interests and work comfortably from home.



Artist's Impression | 3-Bedroom





Artist's Impression | 4-Bedroom



Artist's Impression | 4-Bedroom



Artist's Impression | 4-Bedroom

## Experience Serenity and Spacious Living

### 4-Bedroom Residences

Enjoy unobstructed and breathtaking views of the Bukit Batok Nature Park from selected units.

Every unit features a master bedroom and a junior master bedroom, making them ideal for multi-generational living or, simply, for those who appreciate a spacious home.



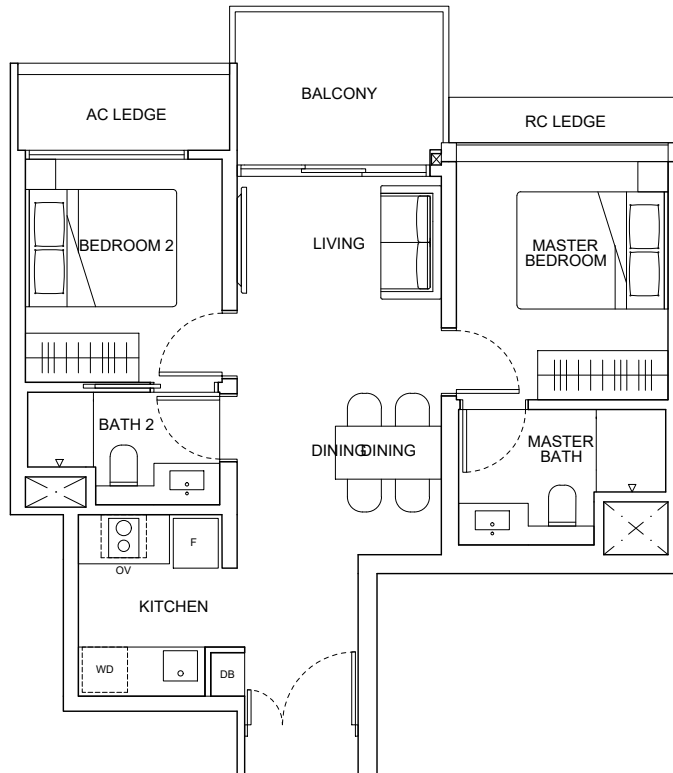
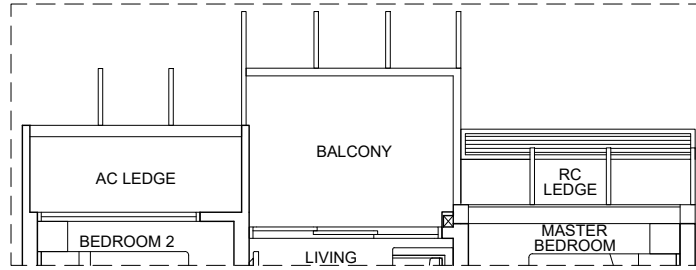
# 2 - BEDROOM TYPE B1A

UNITS (WITHOUT VISUAL SCREENINGS):  
 #02-05, #03-05, #04-05, #05-05,  
 #06-05, #07-05, #08-05, #09-05,  
 #10-05, #11-05, #12-05

UNITS (WITH VISUAL SCREENINGS):  
 #13-05, #14-05, #15-05, #16-05,  
 #17-05, #18-05, #19-05, #20-05,  
 #21-05, #22-05, #23-05, #24-05,  
 #25-05, #26-05, #27-05

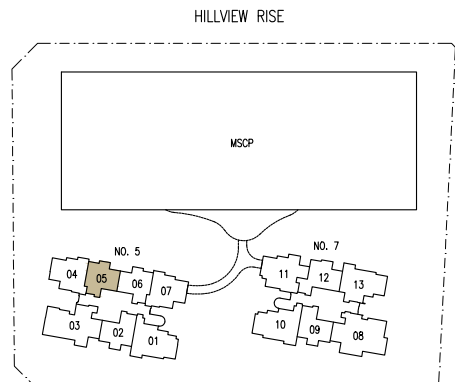
AREA:  
 63 SQ.M / 678 SQ. FT

INSTALLED VISUAL SCREENINGS FOR  
 UNITS AT 13TH STY AND ABOVE



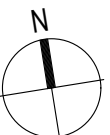
LEGEND:

- DB DISTRIBUTION BOX
- F FRIDGE
- OV OVEN
- WD WASHER-DRYER



DISCLAIMER: THE ABOVE PLAN IS SUBJECT TO ANY AMENDMENTS  
 AS MAY BE APPROVED BY THE RELEVANT AUTHORITIES.

KEY PLAN  
 THIS KEY PLAN IS NOT TO SCALE



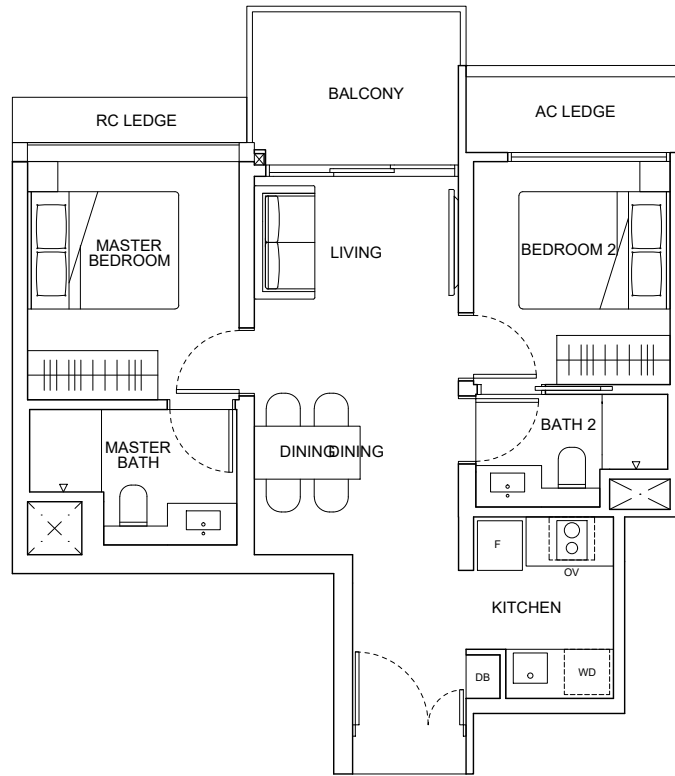
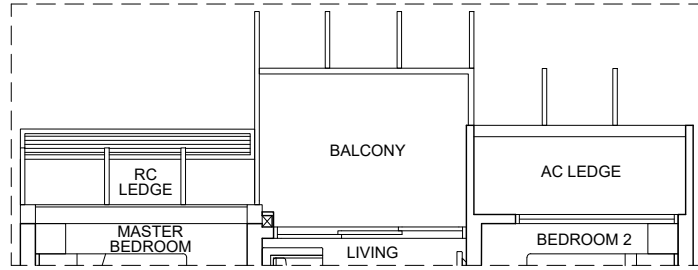


UNITS (WITHOUT VISUAL SCREENINGS):  
 #02-06, #03-06, #04-06, #05-06,  
 #06-06, #07-06, #08-06, #09-06,  
 #10-06, #11-06, #12-06

UNITS (WITH VISUAL SCREENINGS):  
 #13-06, #14-06, #15-06, #16-06,  
 #17-06, #18-06, #19-06, #20-06,  
 #21-06, #22-06, #23-06, #24-06,  
 #25-06, #26-06, #27-06

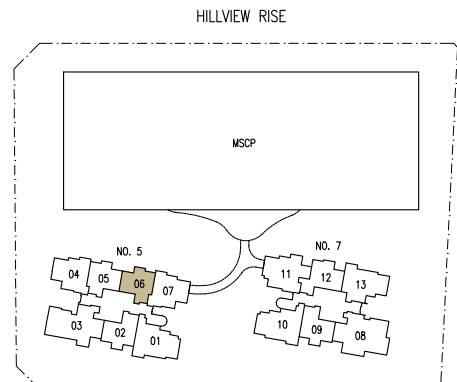
AREA:  
 63 SQ.M / 678 SQ. FT

INSTALLED VISUAL SCREENINGS FOR  
 UNITS AT 13TH STY AND ABOVE



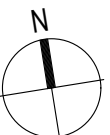
LEGEND:

- DB DISTRIBUTION BOX
- F FRIDGE
- OV OVEN
- WD WASHER-DRYER



DISCLAIMER: THE ABOVE PLAN IS SUBJECT TO ANY AMENDMENTS  
 AS MAY BE APPROVED BY THE RELEVANT AUTHORITIES.

KEY PLAN  
 THIS KEY PLAN IS NOT TO SCALE



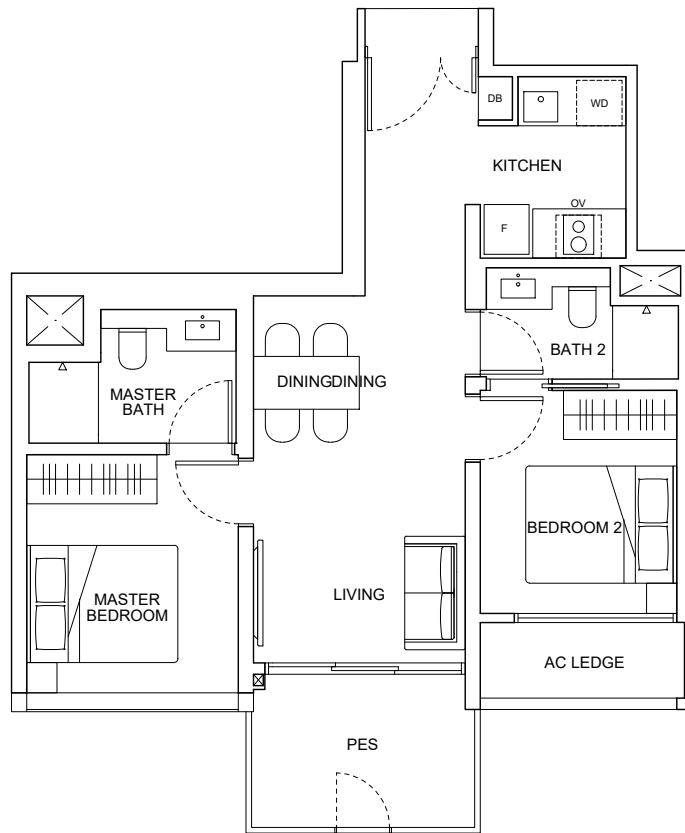




# 2 - BEDROOM TYPE B2A(P)

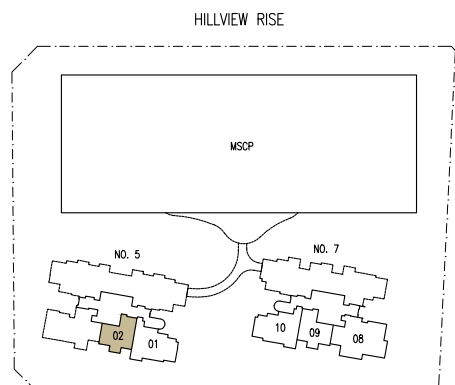
UNITS:  
#01-02

AREA:  
65 SQ.M / 700 SQ. FT



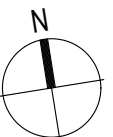
LEGEND:

- DB DISTRIBUTION BOX
- F FRIDGE
- OV OVEN
- WD WASHER-DRYER



DISCLAIMER: THE ABOVE PLAN IS SUBJECT TO ANY AMENDMENTS AS MAY BE APPROVED BY THE RELEVANT AUTHORITIES.

KEY PLAN  
THIS KEY PLAN IS NOT TO SCALE







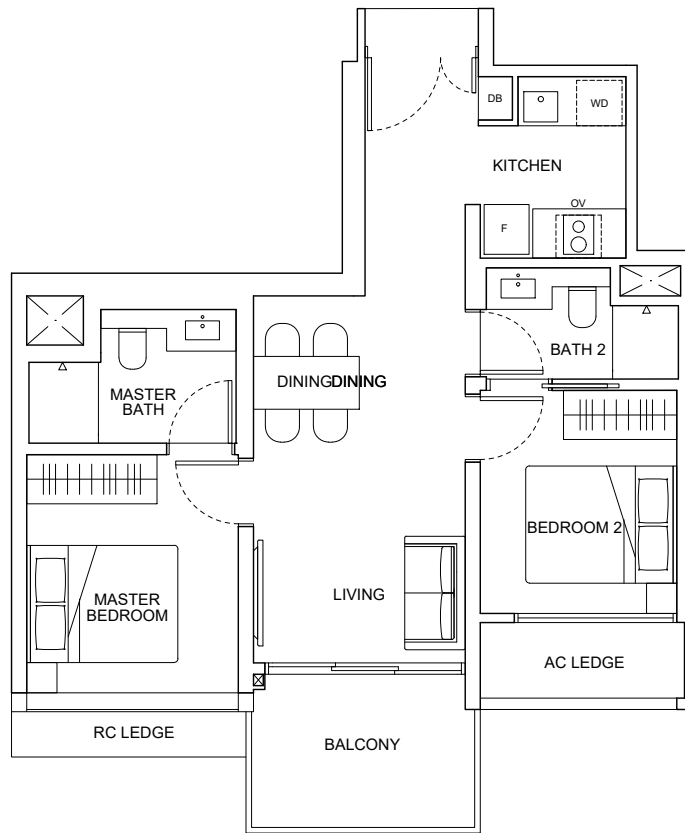
# 2 - BEDROOM TYPE B2A

### UNITS:

#02-02, #03-02, #04-02, #05-02, #06-02, #07-02, #08-02, #09-02, #10-02, #11-02, #12-02, #13-02, #14-02, #15-02, #16-02, #17-02, #18-02, #19-02, #20-02, #21-02, #22-02, #23-02, #24-02, #25-02, #26-02, #27-02

### AREA:

65 SQ.M / 700 SQ. FT

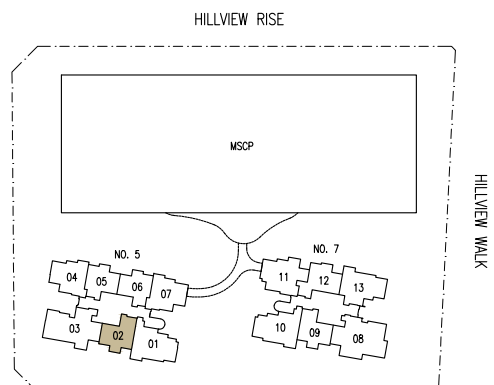


### LEGEND:

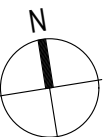
- DB DISTRIBUTION BOX
- F FRIDGE
- OV OVEN
- WD WASHER-DRYER



DISCLAIMER: THE ABOVE PLAN IS SUBJECT TO ANY AMENDMENTS AS MAY BE APPROVED BY THE RELEVANT AUTHORITIES.



KEY PLAN  
THIS KEY PLAN IS NOT TO SCALE



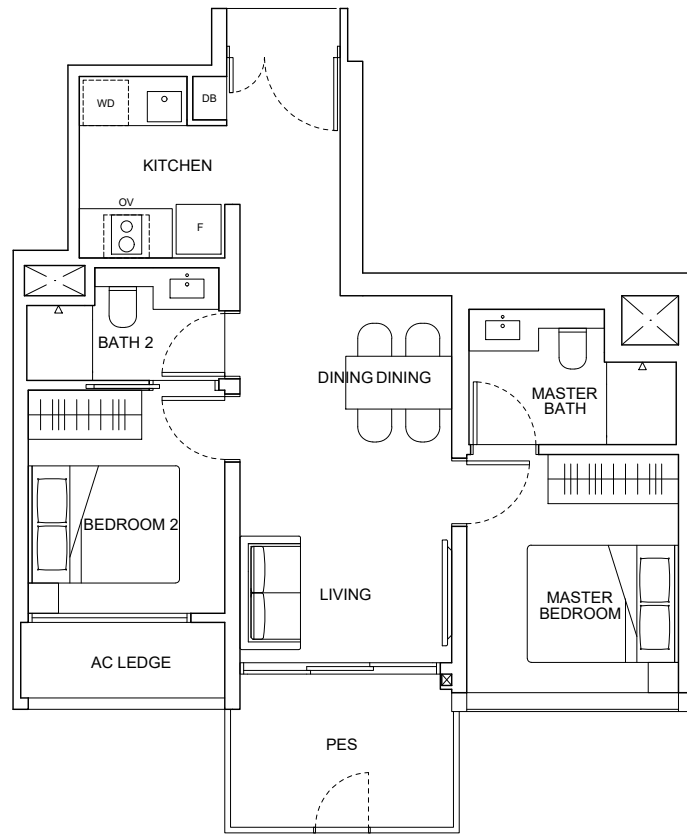




# 2 - BEDROOM TYPE B2B(P)

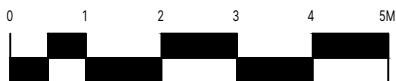
UNITS:  
#01-09

AREA:  
65 SQ.M / 700 SQ. FT

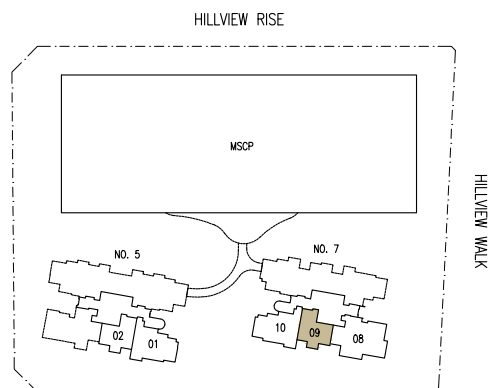


### LEGEND:

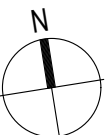
- DB DISTRIBUTION BOX
- F FRIDGE
- OV OVEN
- WD WASHER-DRYER



DISCLAIMER: THE ABOVE PLAN IS SUBJECT TO ANY AMENDMENTS AS MAY BE APPROVED BY THE RELEVANT AUTHORITIES.



KEY PLAN  
THIS KEY PLAN IS NOT TO SCALE







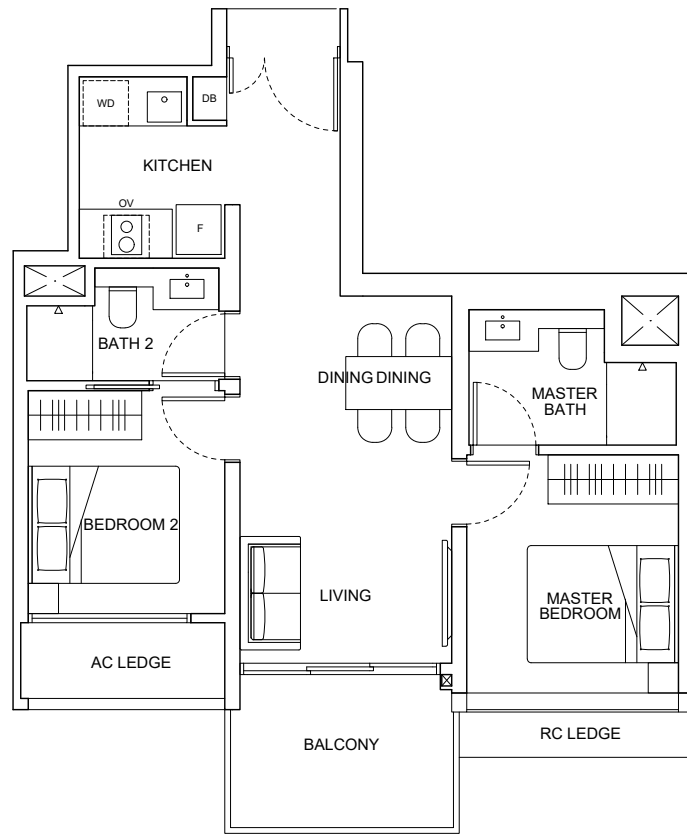
# 2 - BEDROOM TYPE B2B

### UNITS:

#02-09, #03-09, #04-09, #05-09, #06-09, #07-09, #08-09, #09-09, #10-09, #11-09, #12-09, #13-09, #14-09, #15-09, #16-09, #17-09, #18-09, #19-09, #20-09, #21-09, #22-09, #23-09, #24-09, #25-09, #26-09, #27-09, #28-09

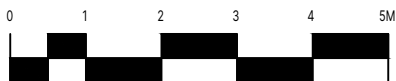
### AREA:

65 SQ.M / 700 SQ. FT

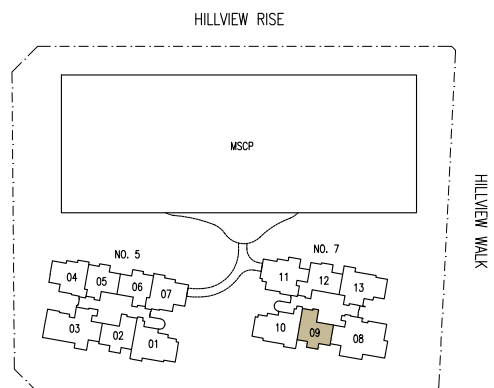


### LEGEND:

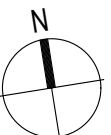
- DB DISTRIBUTION BOX
- F FRIDGE
- OV OVEN
- WD WASHER-DRYER



DISCLAIMER: THE ABOVE PLAN IS SUBJECT TO ANY AMENDMENTS AS MAY BE APPROVED BY THE RELEVANT AUTHORITIES.



KEY PLAN  
THIS KEY PLAN IS NOT TO SCALE



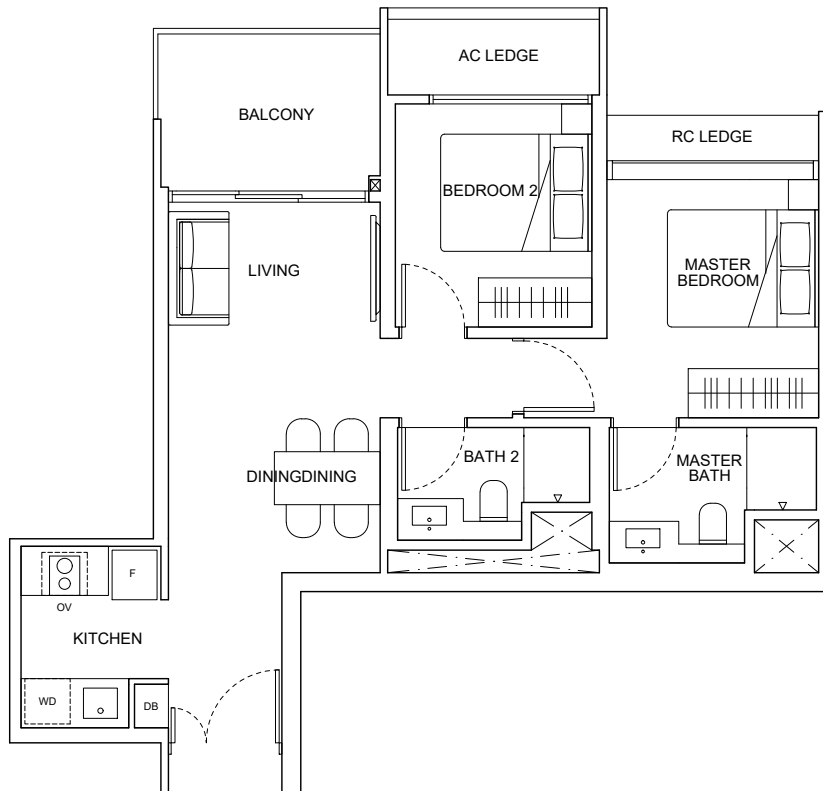
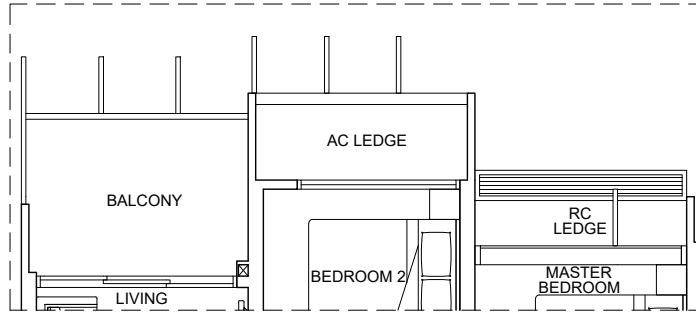


UNITS (WITHOUT VISUAL SCREENINGS):  
 #02-12, #03-12, #04-12, #05-12,  
 #06-12, #07-12, #08-12, #09-12,  
 #10-12, #11-12, #12-12

UNITS (WITH VISUAL SCREENINGS):  
 #13-12, #14-12, #15-12, #16-12,  
 #17-12, #18-12, #19-12, #20-12,  
 #21-12, #22-12, #23-12, #24-12,  
 #25-12, #26-12, #27-12, #28-12

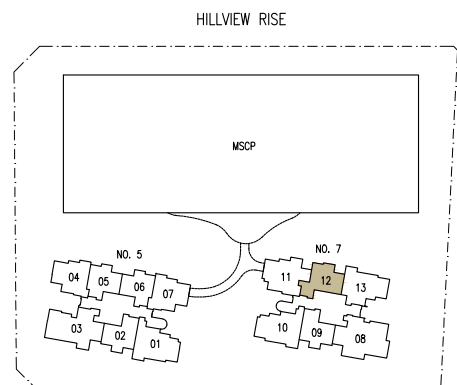
AREA:  
 67 SQ.M / 721 SQ. FT

INSTALLED VISUAL SCREENINGS FOR  
 UNITS AT 13TH STY AND ABOVE



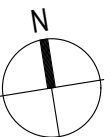
LEGEND:

- DB DISTRIBUTION BOX
- F FRIDGE
- OV OVEN
- WD WASHER-DRYER



DISCLAIMER: THE ABOVE PLAN IS SUBJECT TO ANY AMENDMENTS  
 AS MAY BE APPROVED BY THE RELEVANT AUTHORITIES.

KEY PLAN  
 THIS KEY PLAN IS NOT TO SCALE







# 2 - BEDROOM + STUDY TYPE B4A

UNITS:

#02-04, #03-04, #04-04, #05-04, #06-04,  
#07-04, #08-04, #09-04, #10-04, #11-04, #12-04

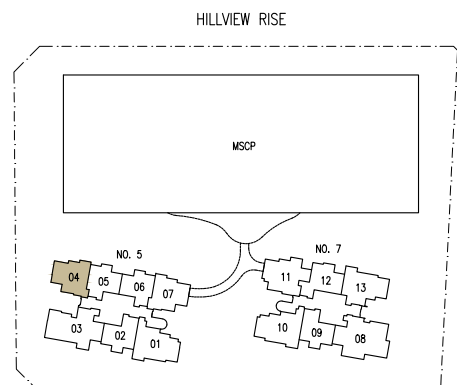
AREA:

74 SQ.M / 797 SQ. FT



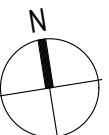
LEGEND:

- DB DISTRIBUTION BOX
- F FRIDGE
- OV OVEN
- WD WASHER-DRYER



DISCLAIMER: THE ABOVE PLAN IS SUBJECT TO ANY AMENDMENTS  
AS MAY BE APPROVED BY THE RELEVANT AUTHORITIES.

KEY PLAN  
THIS KEY PLAN IS NOT TO SCALE







# 2 - BEDROOM + STUDY TYPE B4B

UNITS (WITH VISUAL SCREENINGS):

#13-04, #14-04, #15-04, #16-04, #17-04, #18-04, #19-04,  
#20-04, #21-04, #22-04, #23-04, #24-04, #25-04, #26-04, #27-04

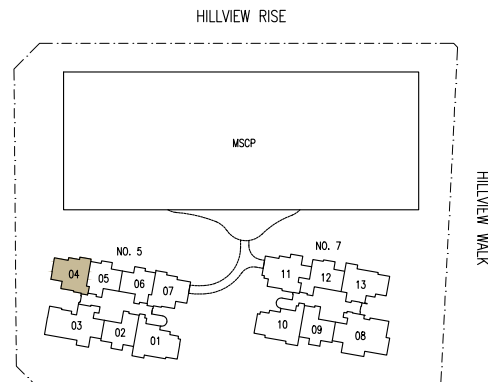
AREA:

74 SQ.M / 797 SQ. FT



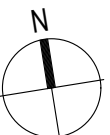
LEGEND:

- DB DISTRIBUTION BOX
- F FRIDGE
- OV OVEN
- WD WASHER-DRYER



DISCLAIMER: THE ABOVE PLAN IS SUBJECT TO ANY AMENDMENTS AS MAY BE APPROVED BY THE RELEVANT AUTHORITIES.

KEY PLAN  
THIS KEY PLAN IS NOT TO SCALE







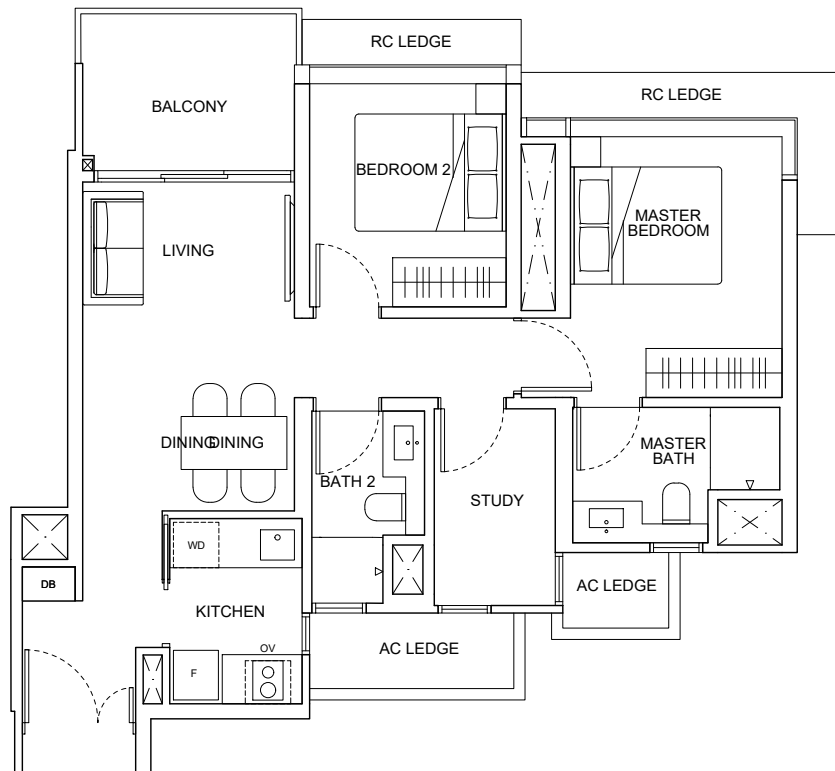
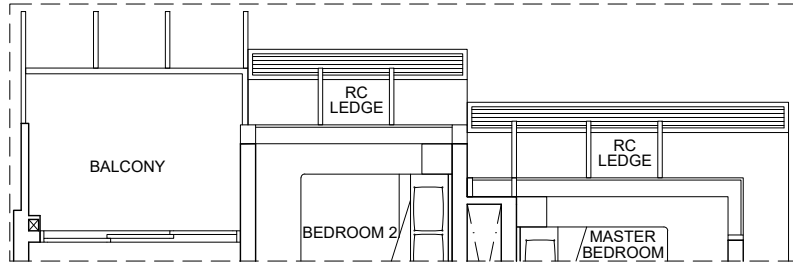
# 2 - BEDROOM + STUDY TYPE B4C

UNITS (WITHOUT VISUAL SCREENINGS):  
 #06-07, #07-07, #08-07, #09-07,  
 #10-07, #11-07, #12-07

UNITS (WITH VISUAL SCREENINGS):  
 #13-07, #14-07, #15-07, #16-07,  
 #17-07, #18-07, #19-07, #20-07,  
 #21-07, #22-07, #23-07, #24-07,  
 #25-07, #26-07, #27-07

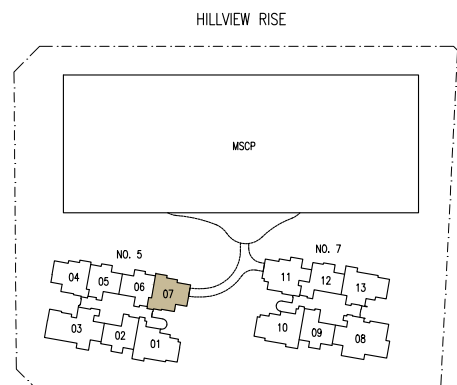
AREA:  
 74 SQ.M / 797 SQ. FT

INSTALLED VISUAL SCREENINGS FOR  
 UNITS AT 13TH STY AND ABOVE



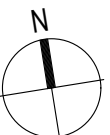
LEGEND:

- DB DISTRIBUTION BOX
- F FRIDGE
- OV OVEN
- WD WASHER-DRYER



DISCLAIMER: THE ABOVE PLAN IS SUBJECT TO ANY AMENDMENTS  
 AS MAY BE APPROVED BY THE RELEVANT AUTHORITIES.

KEY PLAN  
 THIS KEY PLAN IS NOT TO SCALE

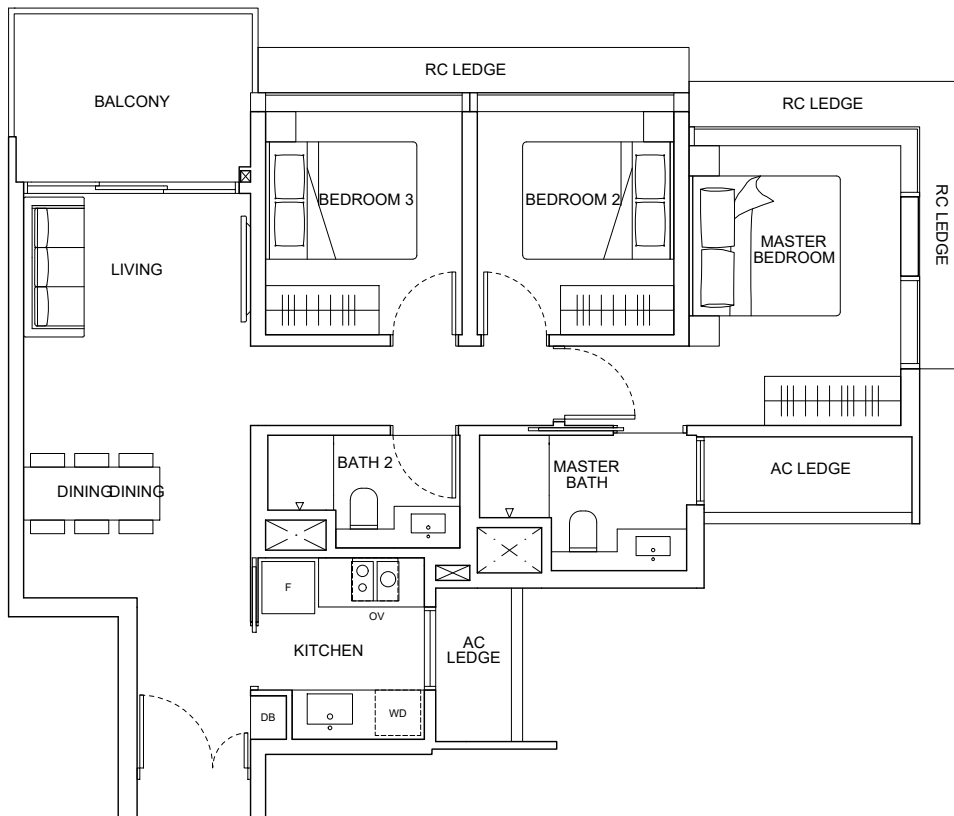
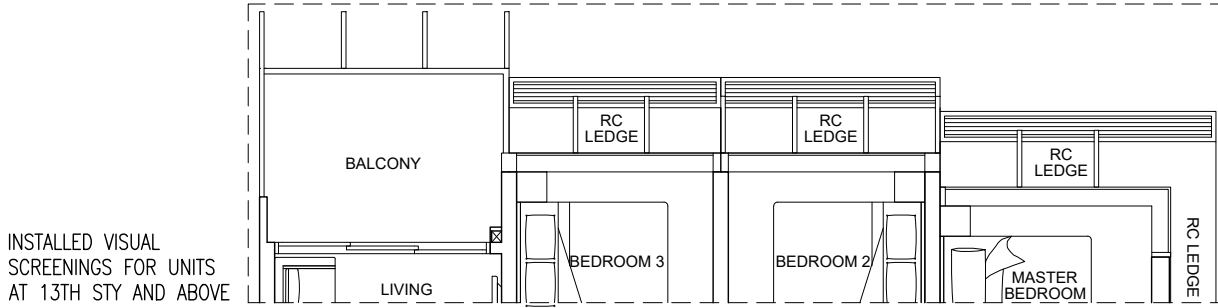




UNITS (WITHOUT VISUAL SCREENINGS):  
 #02-13, #03-13, #04-13, #05-13,  
 #06-13, #07-13, #08-13, #09-13,  
 #10-13, #11-13, #12-13

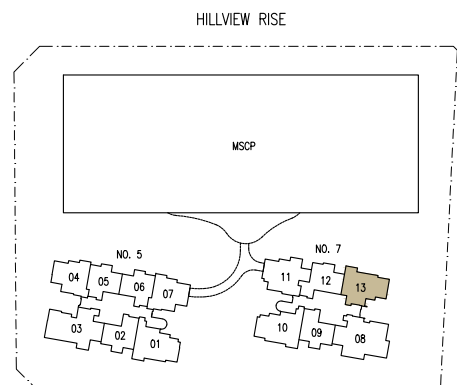
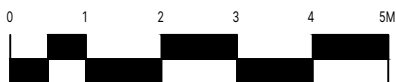
UNITS (WITH VISUAL SCREENINGS):  
 #13-13, #14-13, #15-13, #16-13,  
 #17-13, #18-13, #19-13, #20-13,  
 #21-13, #22-13, #23-13, #24-13,  
 #25-13, #26-13, #27-13

AREA:  
 88 SQ.M / 947 SQ. FT



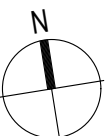
LEGEND:

- DB DISTRIBUTION BOX
- F FRIDGE
- OV OVEN
- WD WASHER-DRYER



DISCLAIMER: THE ABOVE PLAN IS SUBJECT TO ANY AMENDMENTS AS MAY BE APPROVED BY THE RELEVANT AUTHORITIES.

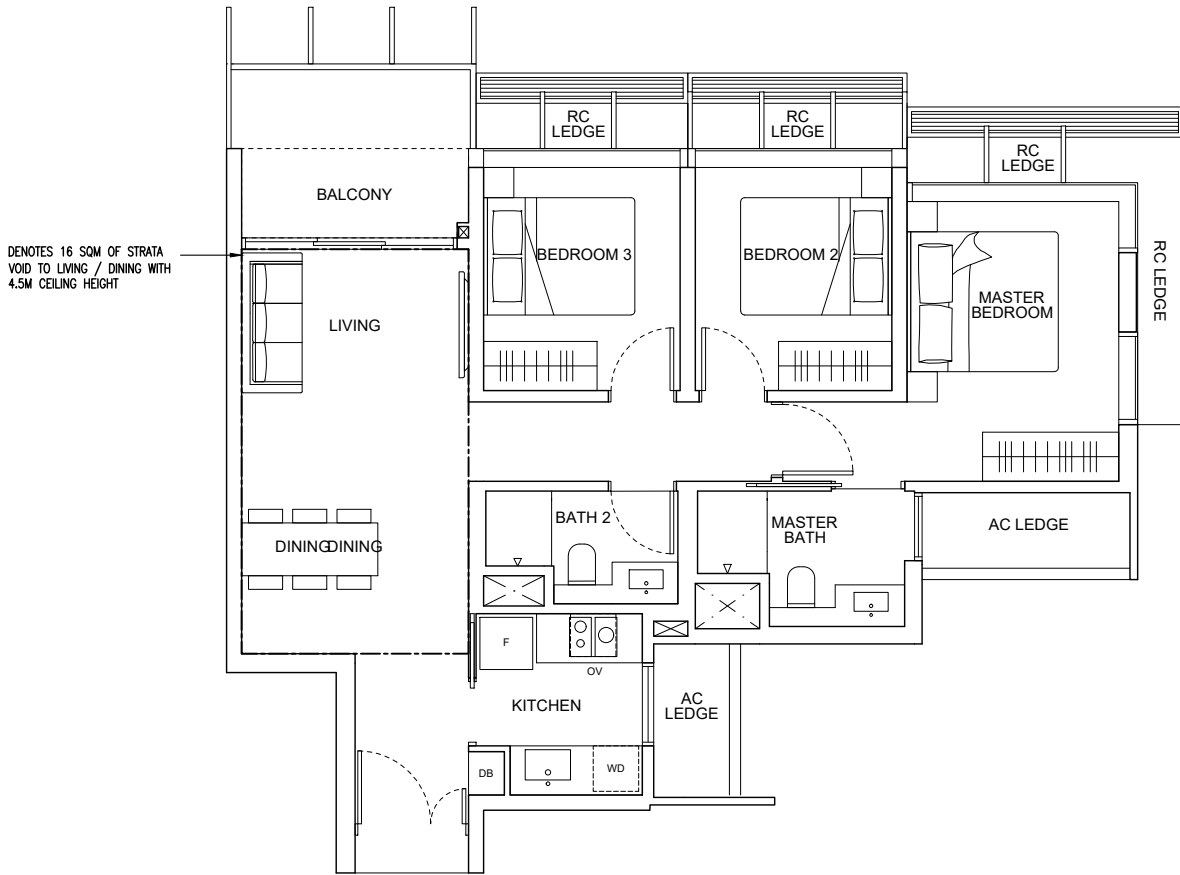
KEY PLAN  
 THIS KEY PLAN IS NOT TO SCALE





UNITS (WITH VISUAL SCREENINGS):  
#28-13

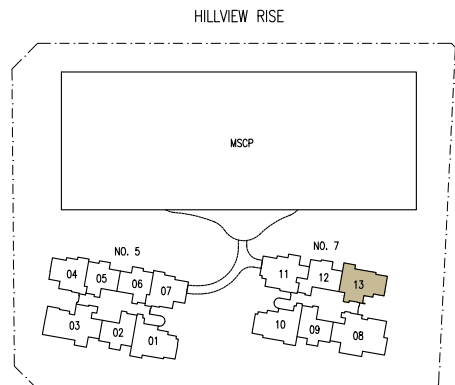
AREA:  
106 SQ.M / 1141 SQ. FT  
(includes 16 sqm of strata void to  
living / dining with 4.5m ceiling height)



DENOTES 16 SQM OF STRATA  
VOID TO LIVING / DINING WITH  
4.5M CEILING HEIGHT

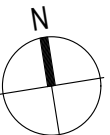
LEGEND:

- DB DISTRIBUTION BOX
- F FRIDGE
- OV OVEN
- WD WASHER-DRYER



DISCLAIMER: THE ABOVE PLAN IS SUBJECT TO ANY AMENDMENTS  
AS MAY BE APPROVED BY THE RELEVANT AUTHORITIES.

KEY PLAN  
THIS KEY PLAN IS NOT TO SCALE







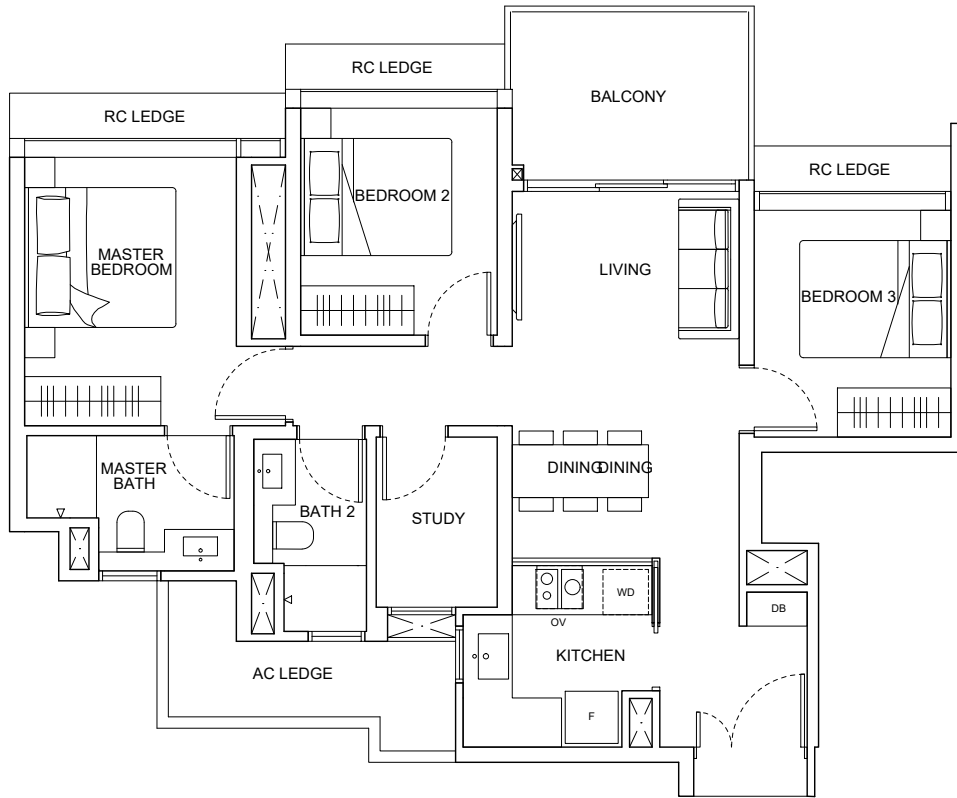
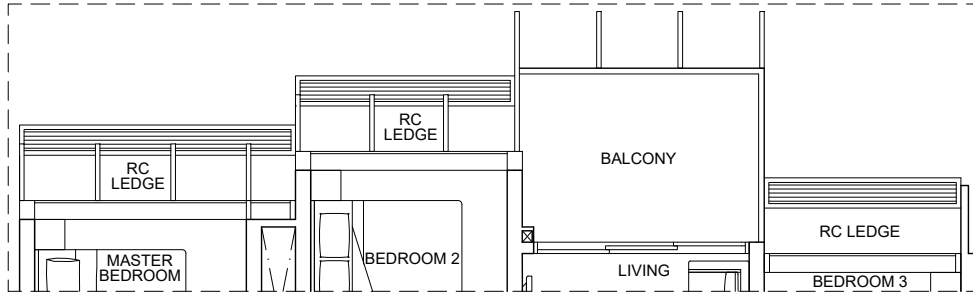
# 3 - BEDROOM + STUDY TYPE C2

UNITS (WITHOUT VISUAL SCREENINGS):  
 #06-11, #07-11, #08-11, #09-11,  
 #10-11, #11-11, #12-11

UNITS (WITH VISUAL SCREENINGS):  
 #13-11, #14-11, #15-11, #16-11,  
 #17-11, #18-11, #19-11, #20-11,  
 #21-11, #22-11, #23-11, #24-11,  
 #25-11, #26-11, #27-11

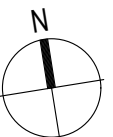
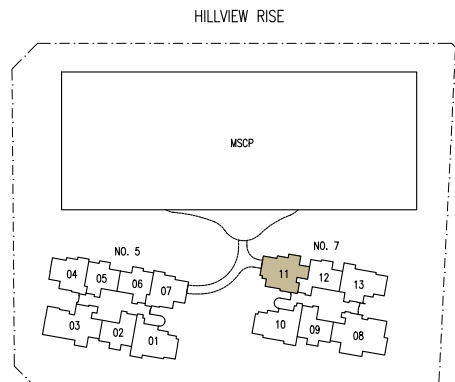
AREA:  
 89 SQ.M / 958 SQ. FT

INSTALLED VISUAL  
 SCREENINGS FOR UNITS  
 AT 13TH STY AND ABOVE



LEGEND:

- DB DISTRIBUTION BOX
- F FRIDGE
- Ov OVEN
- WD WASHER-DRYER



DISCLAIMER: THE ABOVE PLAN IS SUBJECT TO ANY AMENDMENTS  
 AS MAY BE APPROVED BY THE RELEVANT AUTHORITIES.

KEY PLAN  
 THIS KEY PLAN IS NOT TO SCALE

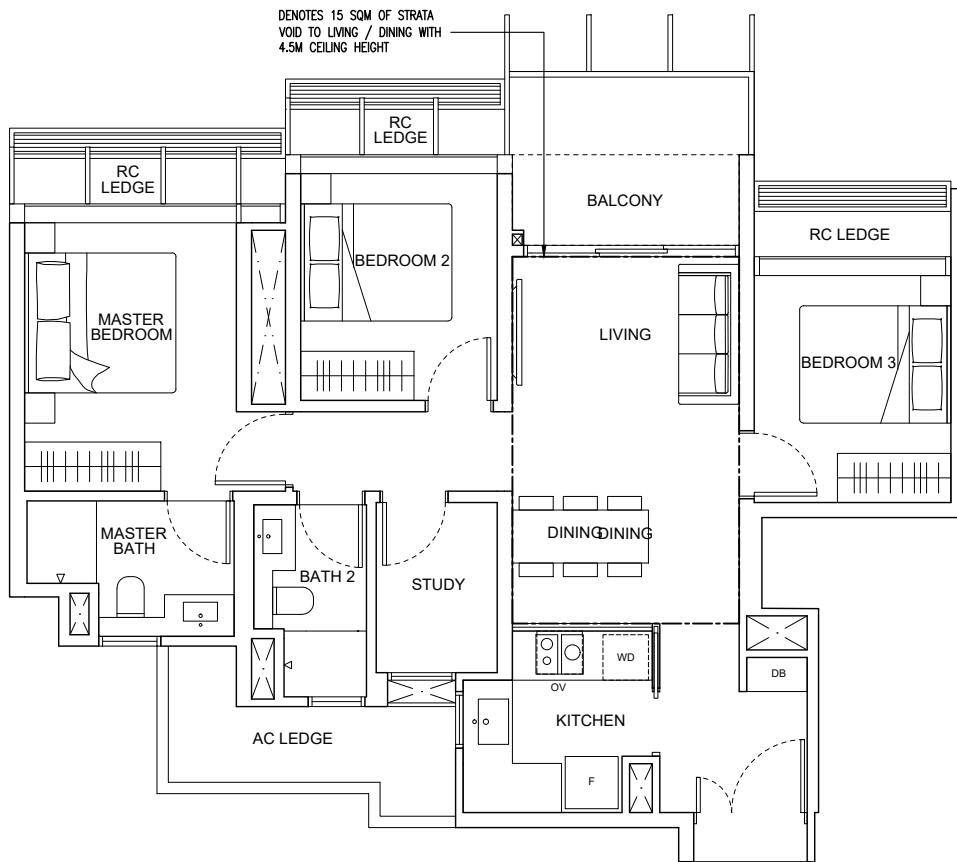




# 3 - BEDROOM + STUDY TYPE C2(D)

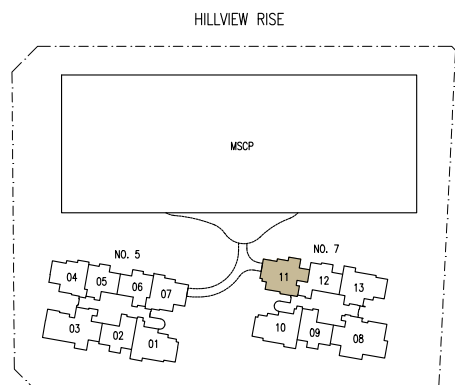
UNITS (WITH VISUAL SCREENINGS):  
#28-11

AREA:  
105 SQ.M / 1130 SQ. FT  
(includes 15 sqm of strata void to living / dining with 4.5m ceiling height)



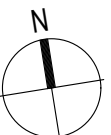
**LEGEND:**

- DB DISTRIBUTION BOX
- F FRIDGE
- OV OVEN
- WD WASHER-DRYER



DISCLAIMER: THE ABOVE PLAN IS SUBJECT TO ANY AMENDMENTS AS MAY BE APPROVED BY THE RELEVANT AUTHORITIES.

KEY PLAN  
THIS KEY PLAN IS NOT TO SCALE

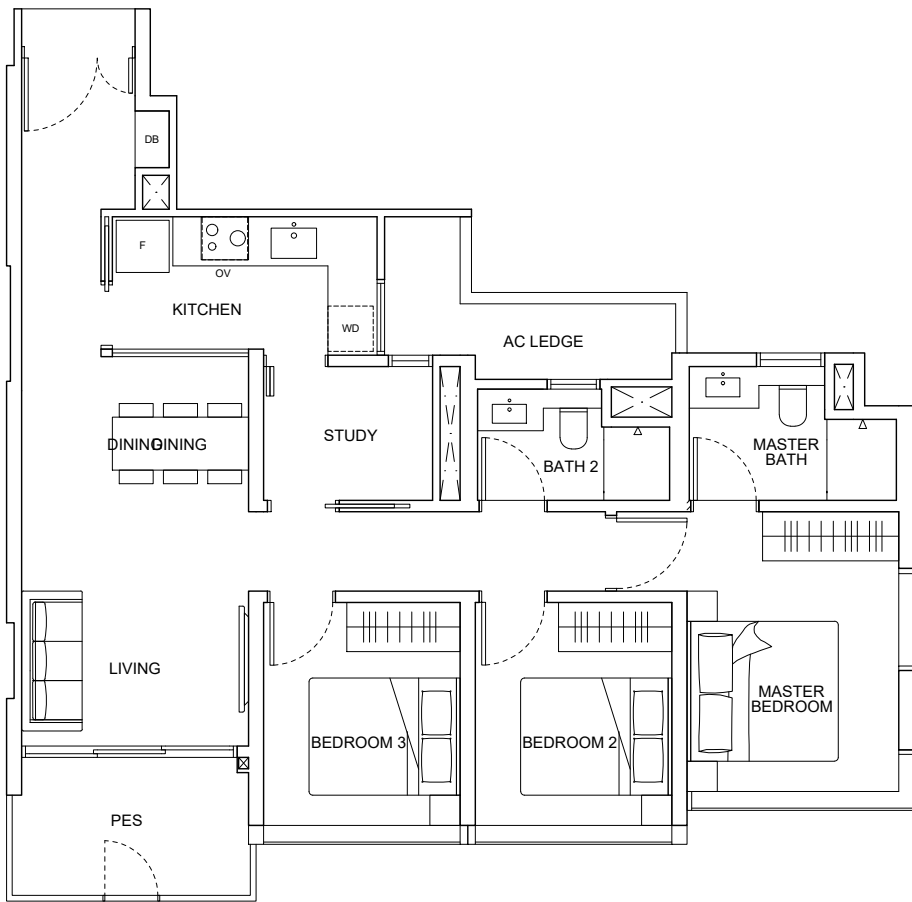




# 3 - BEDROOM + STUDY TYPE C3(P)

UNITS:  
#01-01

AREA:  
94 SQ.M / 1012 SQ. FT

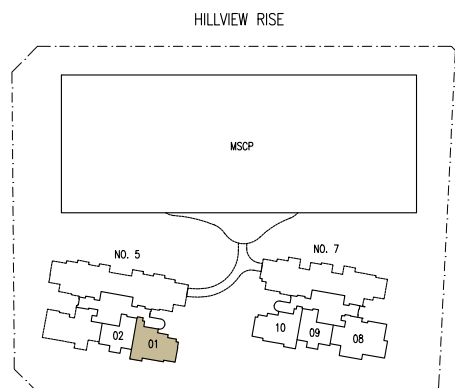


**LEGEND:**

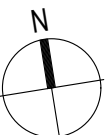
- DB DISTRIBUTION BOX
- F FRIDGE
- OV OVEN
- WD WASHER-DRYER



DISCLAIMER: THE ABOVE PLAN IS SUBJECT TO ANY AMENDMENTS AS MAY BE APPROVED BY THE RELEVANT AUTHORITIES.



KEY PLAN  
THIS KEY PLAN IS NOT TO SCALE







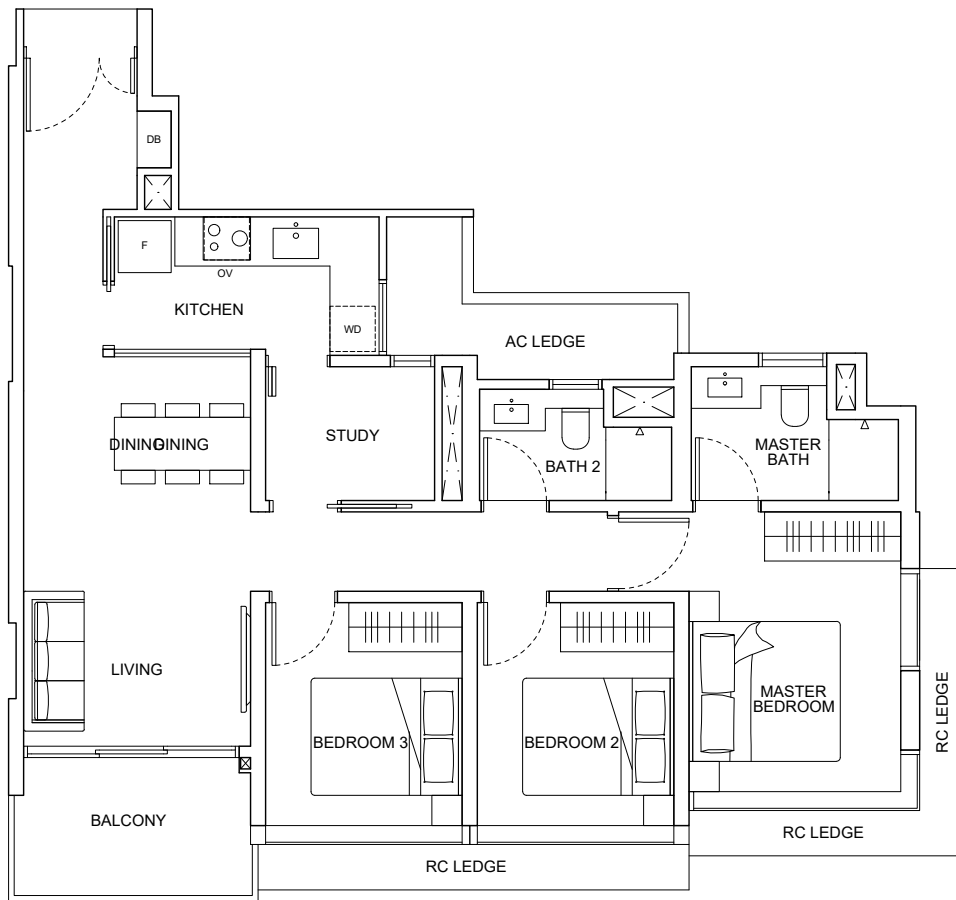
# 3 - BEDROOM + STUDY TYPE C3

UNITS:

#02-01, #03-01, #04-01, #05-01, #06-01, #07-01, #08-01, #09-01, #10-01, #11-01, #12-01, #13-01,  
#14-01, #15-01, #16-01, #17-01, #18-01, #19-01, #20-01, #21-01, #22-01, #23-01, #24-01, #25-01, #26-01

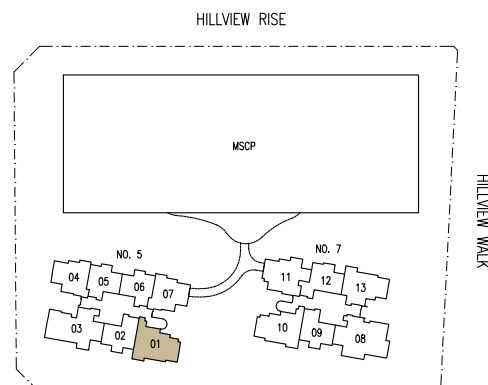
AREA:

94 SQ.M / 1012 SQ. FT



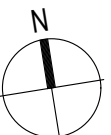
LEGEND:

- DB DISTRIBUTION BOX
- F FRIDGE
- OV OVEN
- WD WASHER-DRYER



DISCLAIMER: THE ABOVE PLAN IS SUBJECT TO ANY AMENDMENTS AS MAY BE APPROVED BY THE RELEVANT AUTHORITIES.

KEY PLAN  
THIS KEY PLAN IS NOT TO SCALE

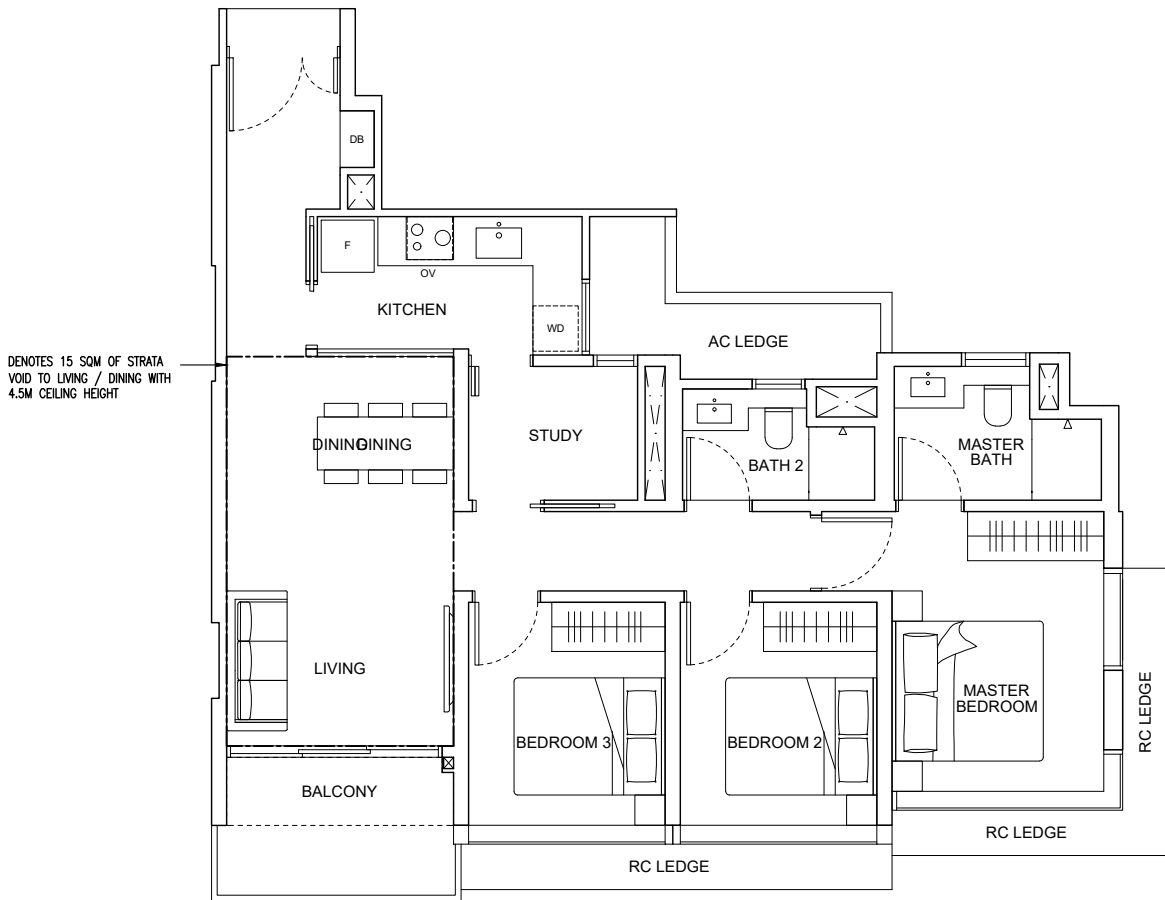




# 3 - BEDROOM + STUDY TYPE C3(D)

UNITS:  
#27-01

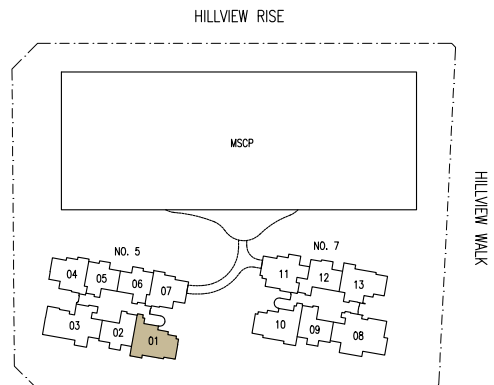
AREA:  
111 SQ.M / 1195 SQ. FT  
(includes 15 sqm of strata void to  
living / dining with 4.5m ceiling height)



DENOTES 15 SQM OF STRATA  
VOID TO LIVING / DINING WITH  
4.5M CEILING HEIGHT

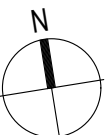
LEGEND:

- DB DISTRIBUTION BOX
- F FRIDGE
- OV OVEN
- WD WASHER-DRYER



DISCLAIMER: THE ABOVE PLAN IS SUBJECT TO ANY AMENDMENTS  
AS MAY BE APPROVED BY THE RELEVANT AUTHORITIES.

KEY PLAN  
THIS KEY PLAN IS NOT TO SCALE



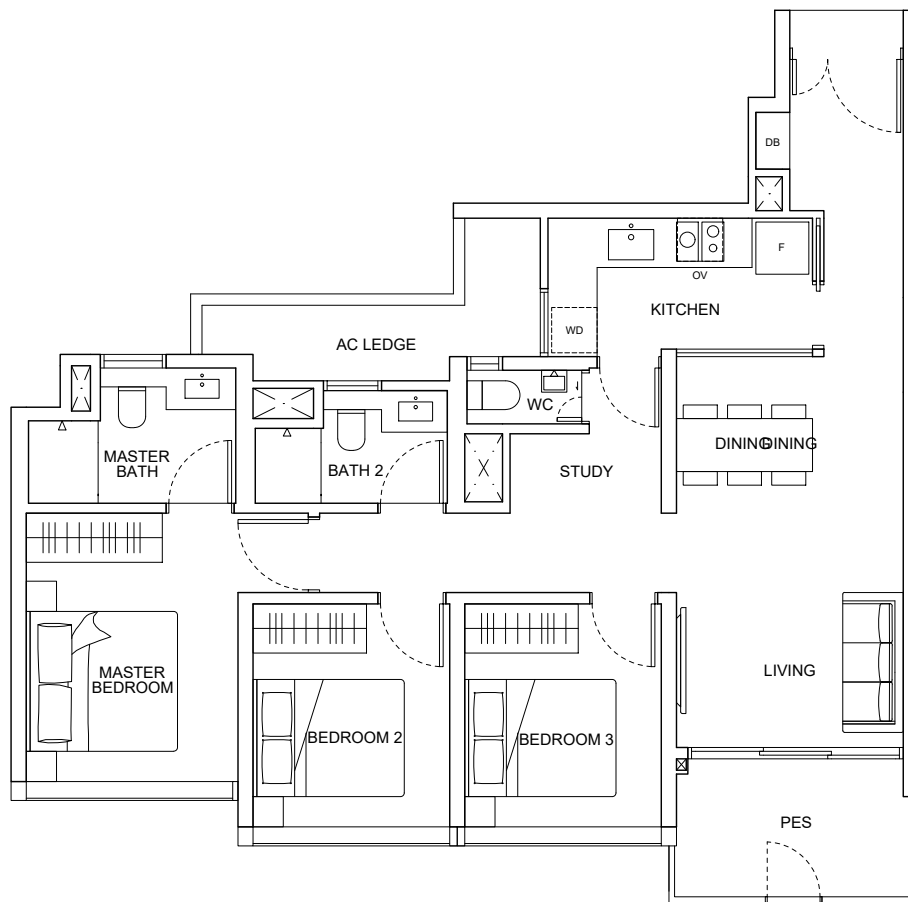




# 3 - BEDROOM + STUDY TYPE C4(P)

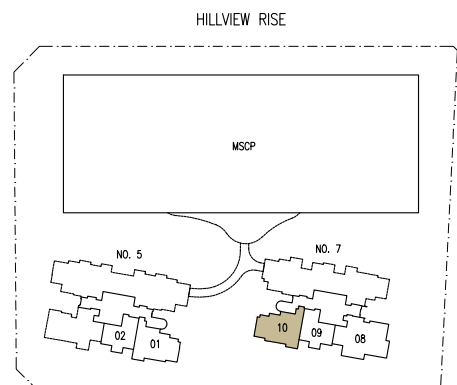
UNITS:  
#01-10

AREA:  
94 SQ.M / 1012 SQ. FT



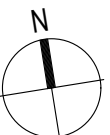
**LEGEND:**

- DB DISTRIBUTION BOX
- F FRIDGE
- OV OVEN
- WD WASHER-DRYER



DISCLAIMER: THE ABOVE PLAN IS SUBJECT TO ANY AMENDMENTS AS MAY BE APPROVED BY THE RELEVANT AUTHORITIES.

KEY PLAN  
THIS KEY PLAN IS NOT TO SCALE





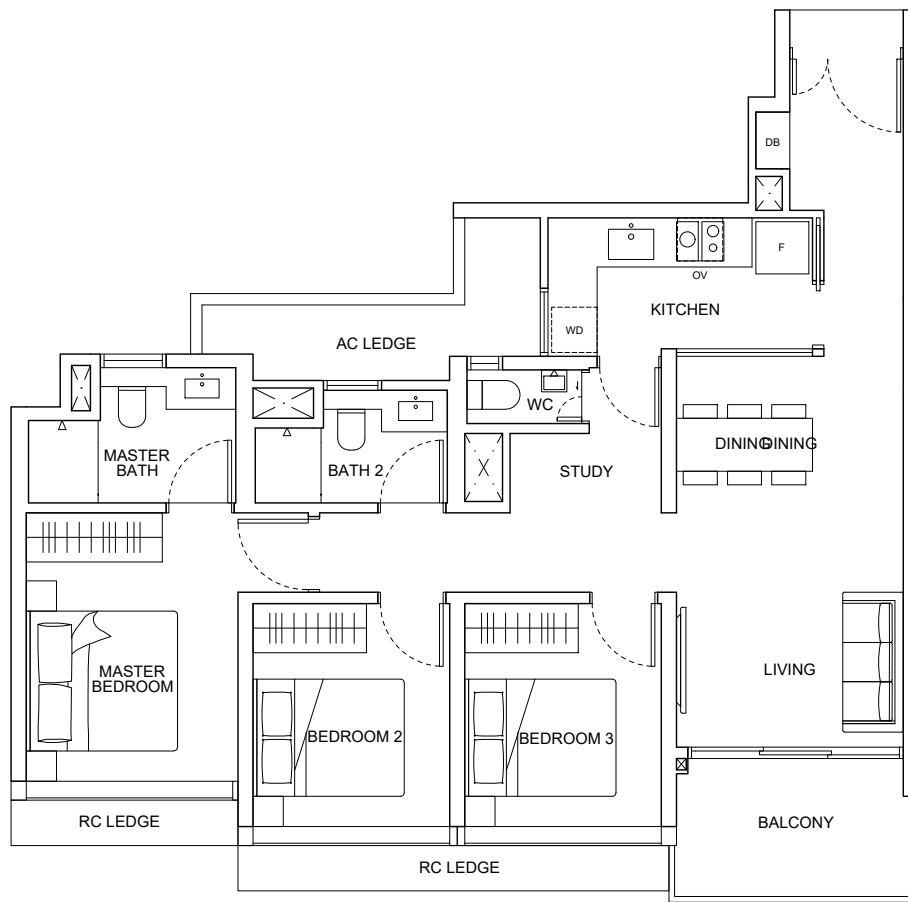
# 3 - BEDROOM + STUDY TYPE C4

UNITS:

#02-10, #03-10, #04-10, #05-10, #06-10, #07-10, #08-10, #09-10, #10-10, #11-10, #12-10, #13-10, #14-10, #15-10, #16-10, #17-10, #18-10, #19-10, #20-10, #21-10, #22-10, #23-10, #24-10, #25-10, #26-10, #27-10

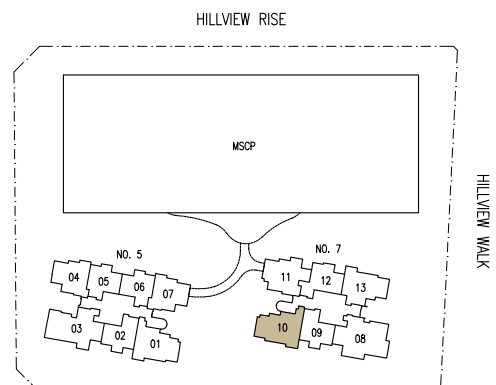
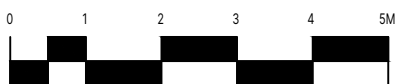
AREA:

94 SQ.M / 1012 SQ. FT



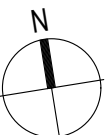
LEGEND:

- DB DISTRIBUTION BOX
- F FRIDGE
- OV OVEN
- WD WASHER-DRYER



DISCLAIMER: THE ABOVE PLAN IS SUBJECT TO ANY AMENDMENTS AS MAY BE APPROVED BY THE RELEVANT AUTHORITIES.

KEY PLAN  
THIS KEY PLAN IS NOT TO SCALE



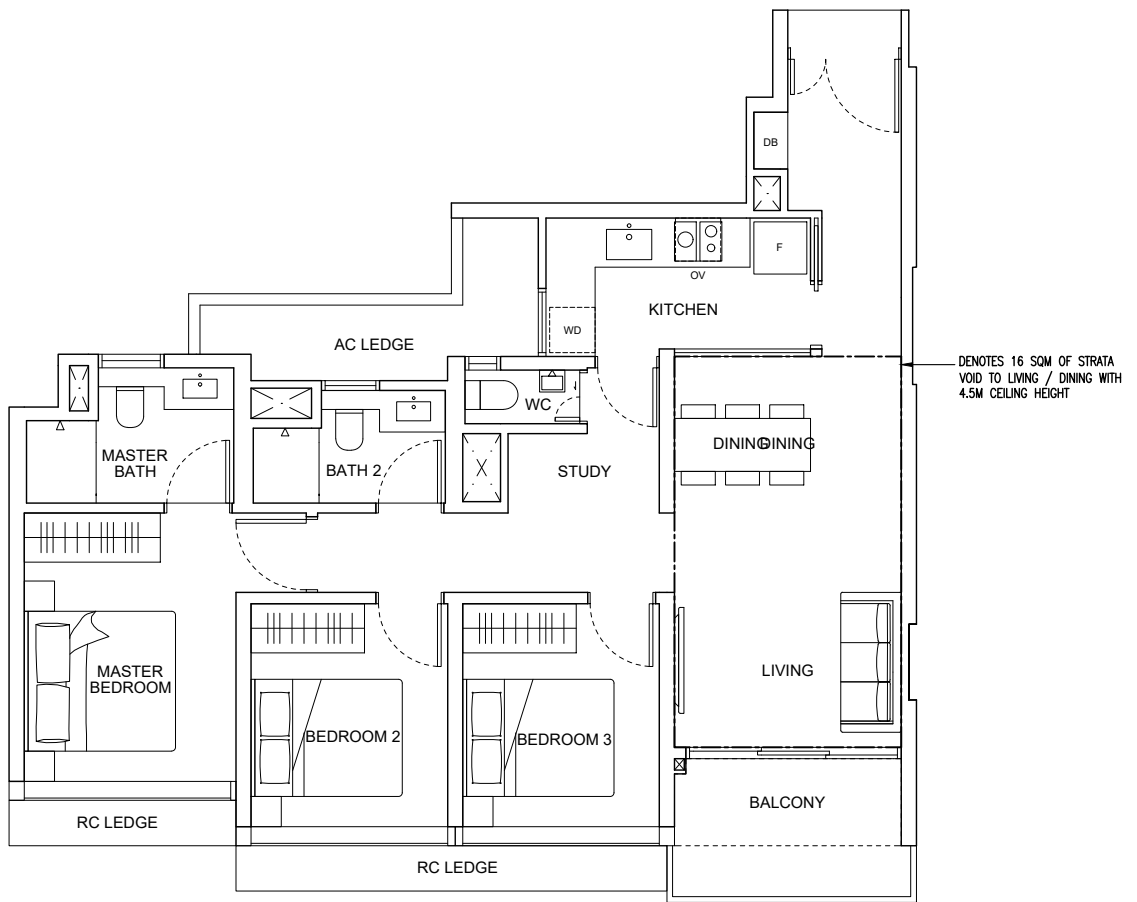




# 3 - BEDROOM + STUDY TYPE C4(D)

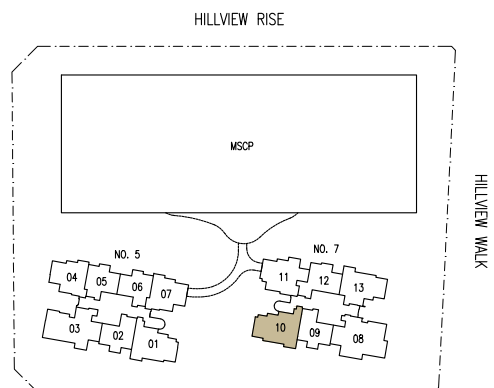
UNITS:  
#28-10

AREA:  
111 SQ.M / 1195 SQ. FT  
(includes 16 sqm of strata void to  
living / dining with 4.5m ceiling height)



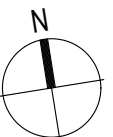
LEGEND:

- DB DISTRIBUTION BOX
- F FRIDGE
- OV OVEN
- WD WASHER-DRYER



DISCLAIMER: THE ABOVE PLAN IS SUBJECT TO ANY AMENDMENTS  
AS MAY BE APPROVED BY THE RELEVANT AUTHORITIES.

KEY PLAN  
THIS KEY PLAN IS NOT TO SCALE





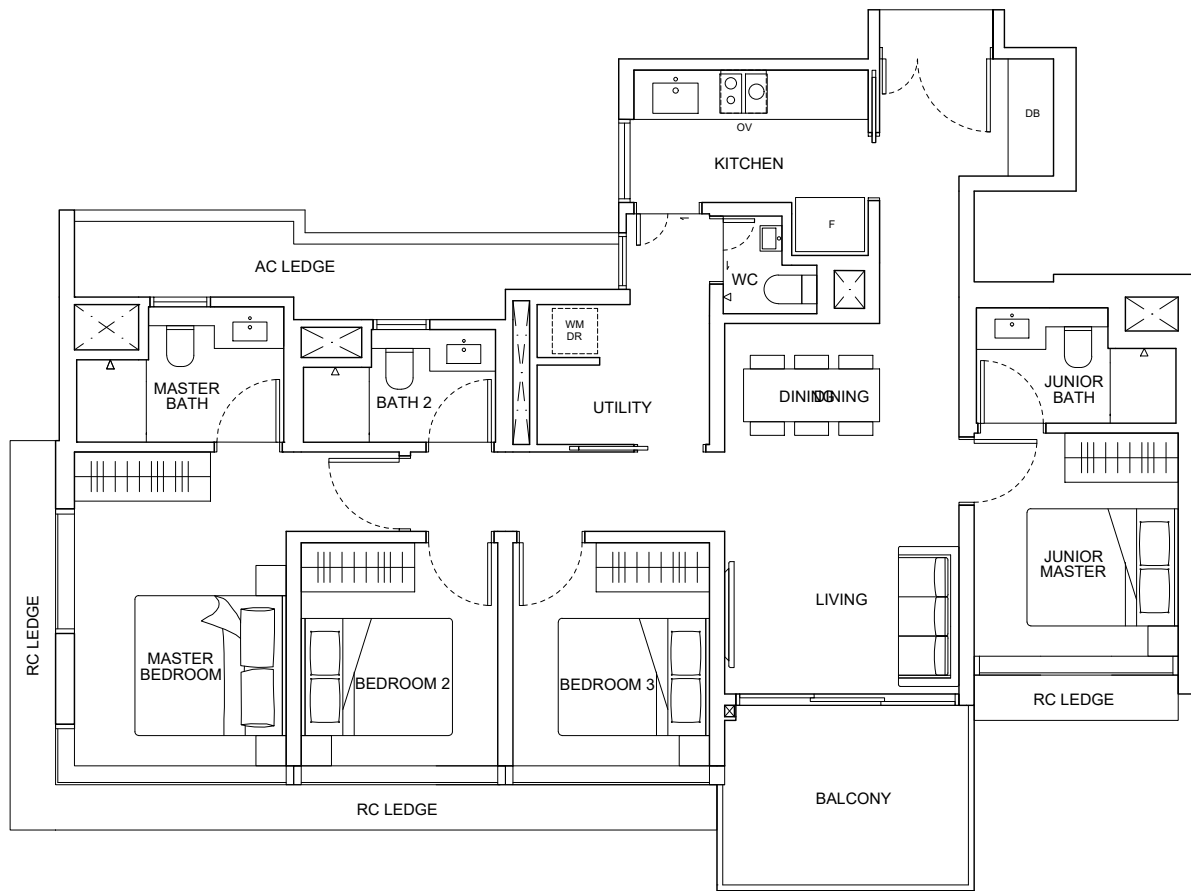
# 4 - BEDROOM TYPE D1A

UNITS:

#02-03, #03-03, #04-03, #05-03, #06-03,  
#07-03, #08-03, #09-03, #10-03, #11-03, #12-03,

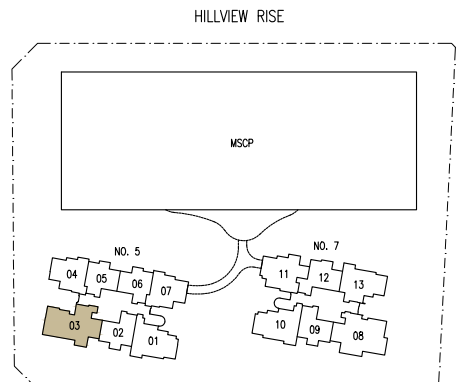
AREA:

117 SQ.M / 1259 SQ. FT



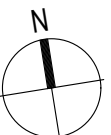
LEGEND:

- DB DISTRIBUTION BOX
- F FRIDGE
- OV OVEN
- WM WASHING MACHINE
- DR DRYER



DISCLAIMER: THE ABOVE PLAN IS SUBJECT TO ANY AMENDMENTS  
AS MAY BE APPROVED BY THE RELEVANT AUTHORITIES.

KEY PLAN  
THIS KEY PLAN IS NOT TO SCALE







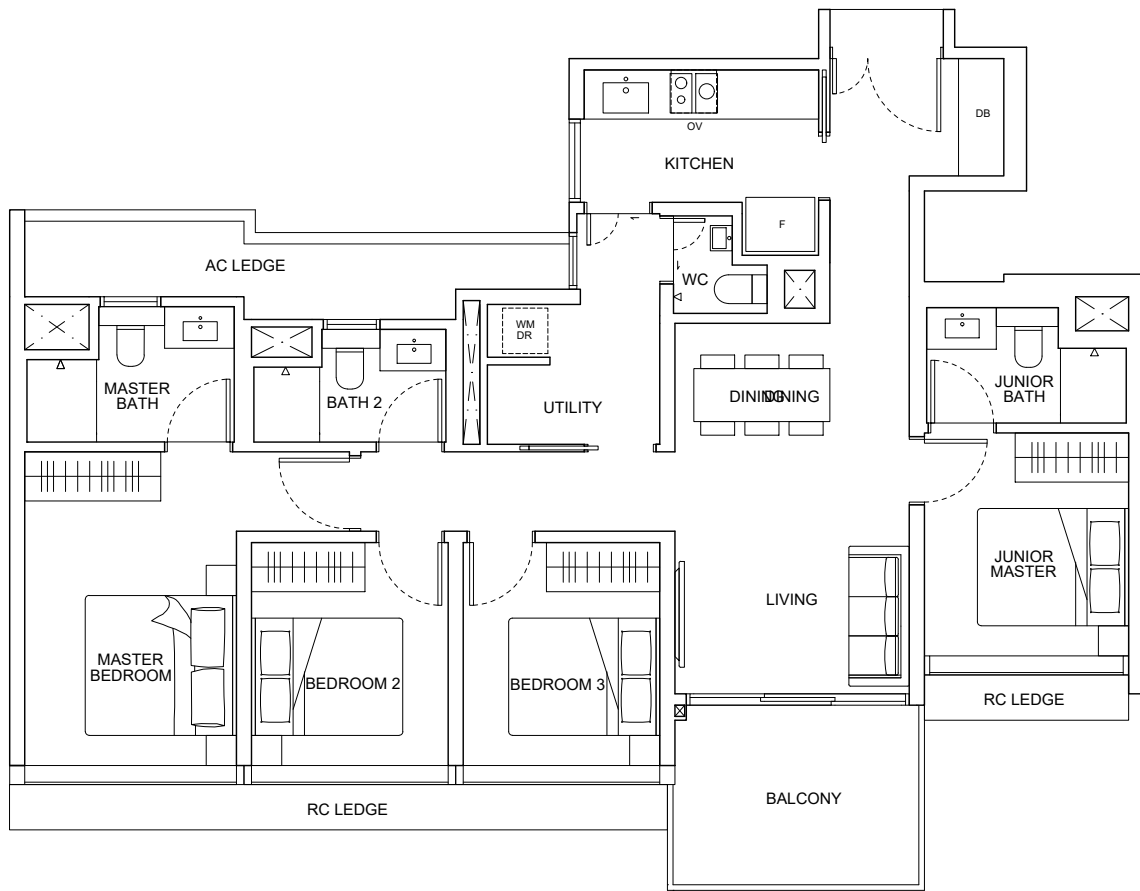
# 4 - BEDROOM TYPE D1B

### UNITS:

#13-03, #14-03, #15-03, #16-03, #17-03, #18-03, #19-03,  
#20-03, #21-03, #22-03, #23-03, #24-03, #25-03, #26-03

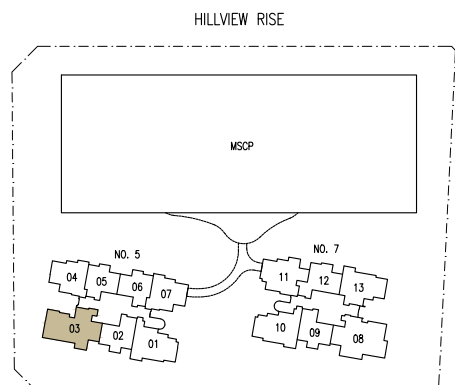
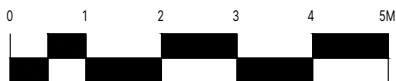
### AREA:

117 SQ.M / 1259 SQ. FT



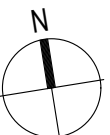
### LEGEND:

- DB DISTRIBUTION BOX
- F FRIDGE
- OV OVEN
- WM WASHING MACHINE
- DR DRYER



DISCLAIMER: THE ABOVE PLAN IS SUBJECT TO ANY AMENDMENTS AS MAY BE APPROVED BY THE RELEVANT AUTHORITIES.

KEY PLAN  
THIS KEY PLAN IS NOT TO SCALE

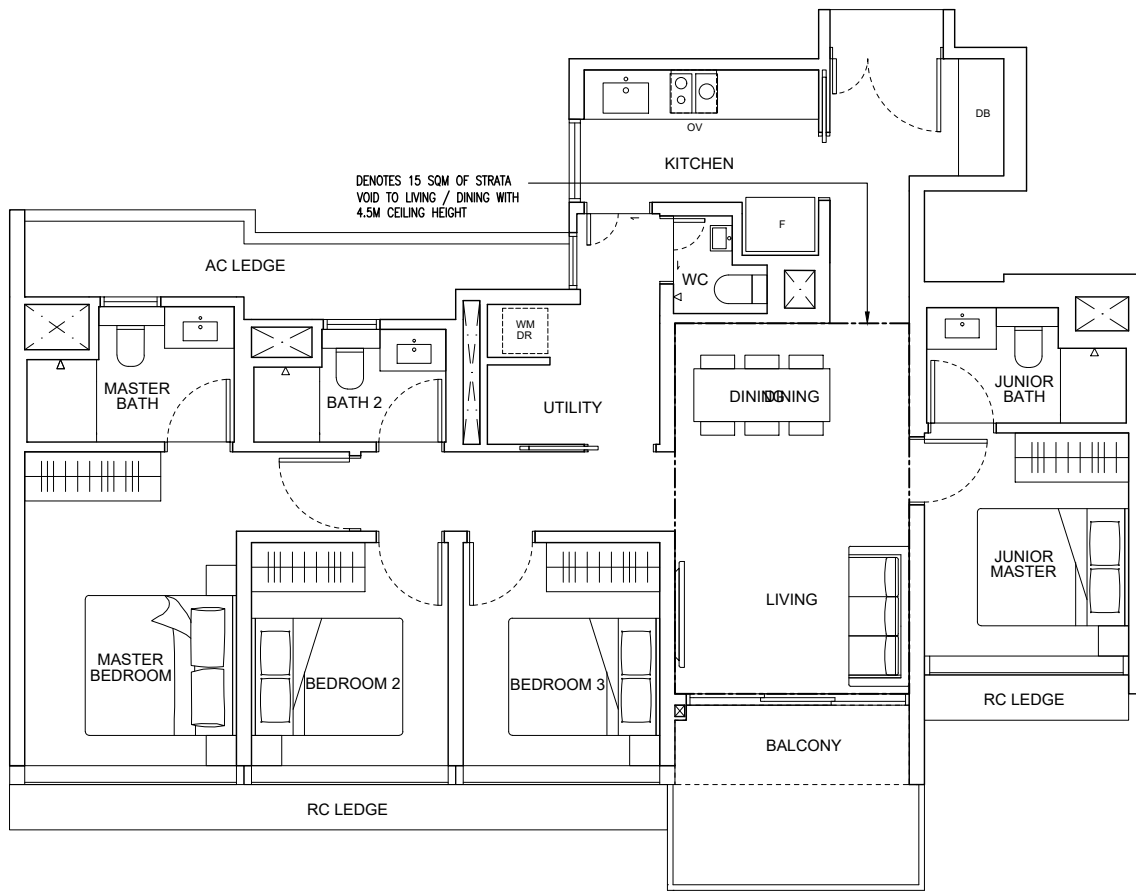




# 4 - BEDROOM TYPE D1B(D)

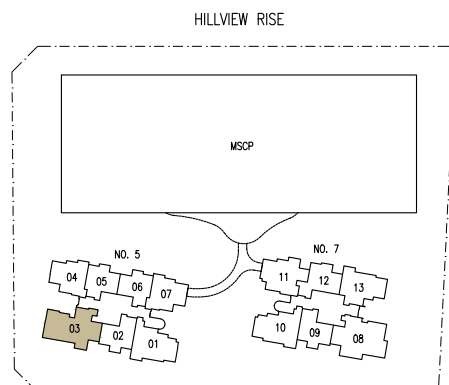
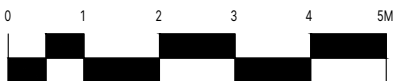
UNITS:  
#27-03

AREA:  
133 SQ.M / 1432 SQ. FT  
(includes 15 sqm of strata void to  
living / dining with 4.5m ceiling height)



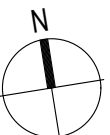
LEGEND:

- DB DISTRIBUTION BOX
- F FRIDGE
- OV OVEN
- WM WASHING MACHINE
- DR DRYER



DISCLAIMER: THE ABOVE PLAN IS SUBJECT TO ANY AMENDMENTS  
AS MAY BE APPROVED BY THE RELEVANT AUTHORITIES.

KEY PLAN  
THIS KEY PLAN IS NOT TO SCALE



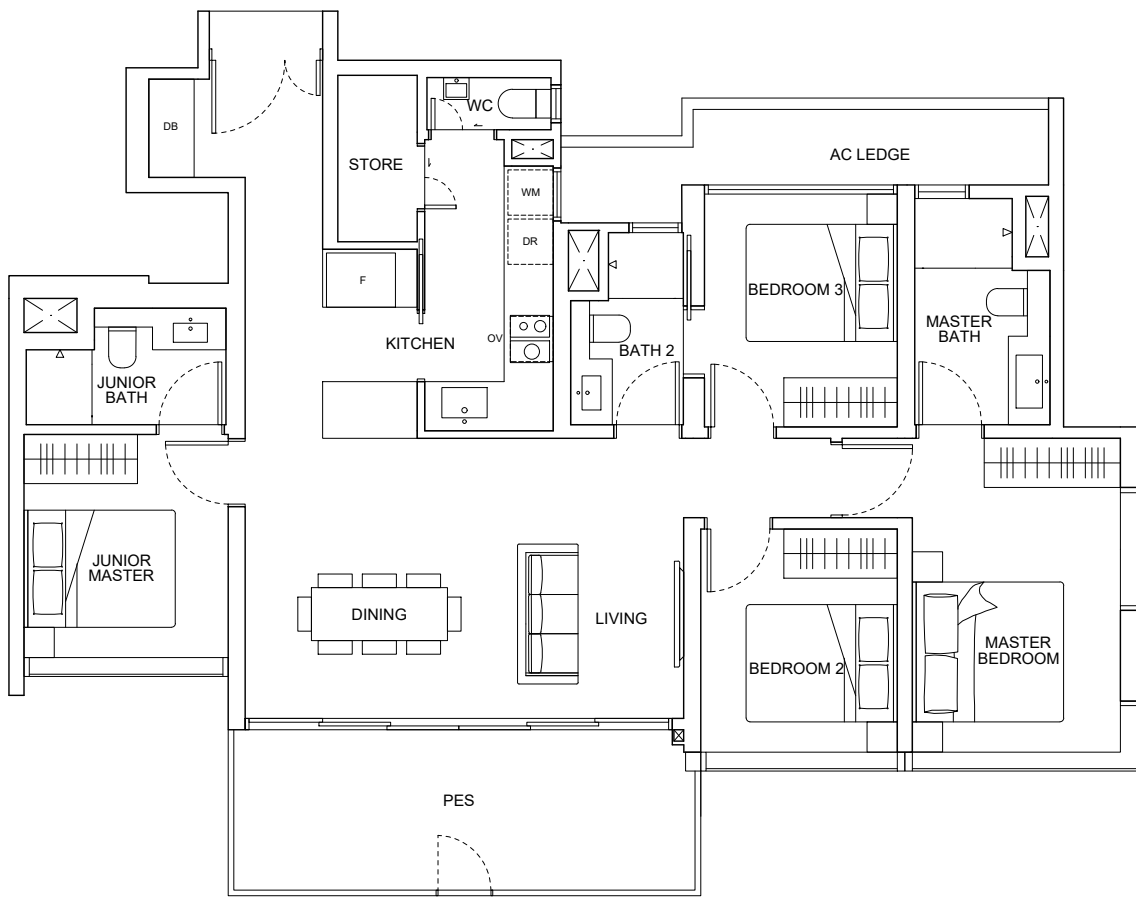




# 4 - BEDROOM TYPE D2(P)

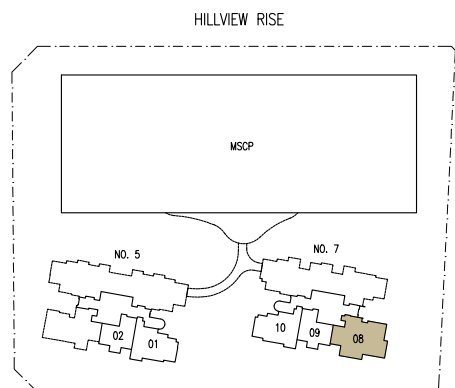
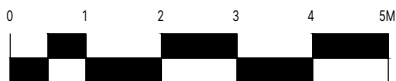
UNITS:  
#01-08

AREA:  
128 SQ.M / 1378 SQ. FT



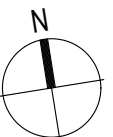
### LEGEND:

- DB DISTRIBUTION BOX
- F FRIDGE
- OV OVEN
- WM WASHING MACHINE
- DR DRYER



DISCLAIMER: THE ABOVE PLAN IS SUBJECT TO ANY AMENDMENTS AS MAY BE APPROVED BY THE RELEVANT AUTHORITIES.

KEY PLAN  
THIS KEY PLAN IS NOT TO SCALE



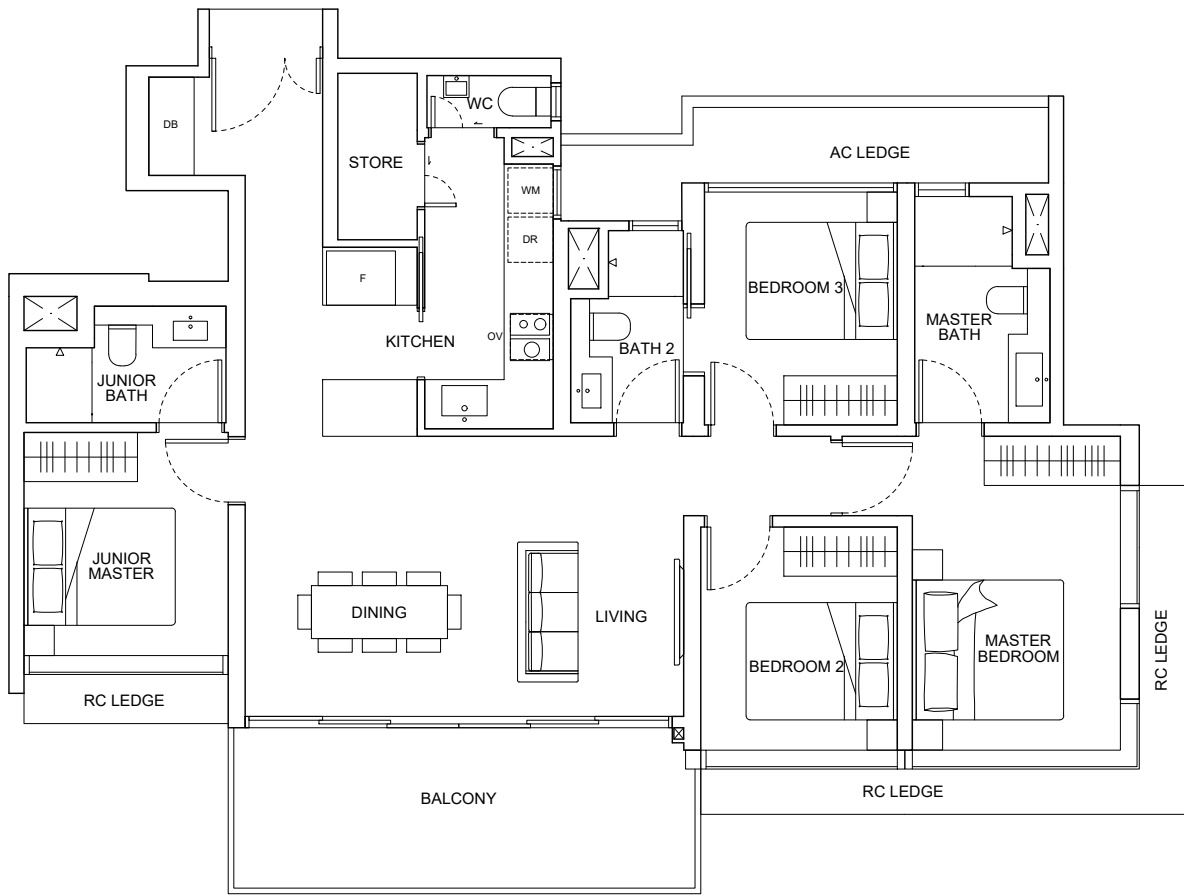
# 4 - BEDROOM TYPE D2

UNITS:

#02-08, #03-08, #04-08, #05-08, #06-08, #07-08, #08-08, #09-08, #10-08, #11-08, #12-08, #13-08, #14-08, #15-08, #16-08, #17-08, #18-08, #19-08, #20-08, #21-08, #22-08, #23-08, #24-08, #25-08, #26-08, #27-08

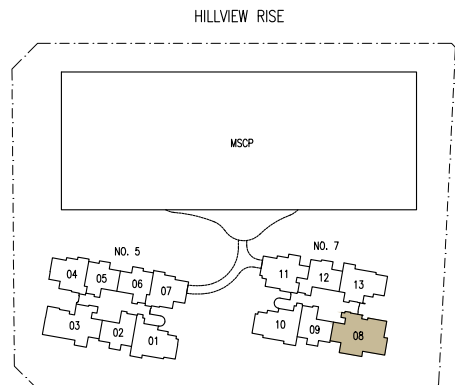
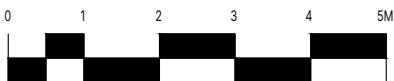
AREA:

128 SQ.M / 1378 SQ. FT



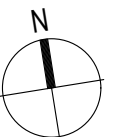
LEGEND:

- DB DISTRIBUTION BOX
- F FRIDGE
- OV OVEN
- WM WASHING MACHINE
- DR DRYER



DISCLAIMER: THE ABOVE PLAN IS SUBJECT TO ANY AMENDMENTS AS MAY BE APPROVED BY THE RELEVANT AUTHORITIES.

KEY PLAN  
THIS KEY PLAN IS NOT TO SCALE

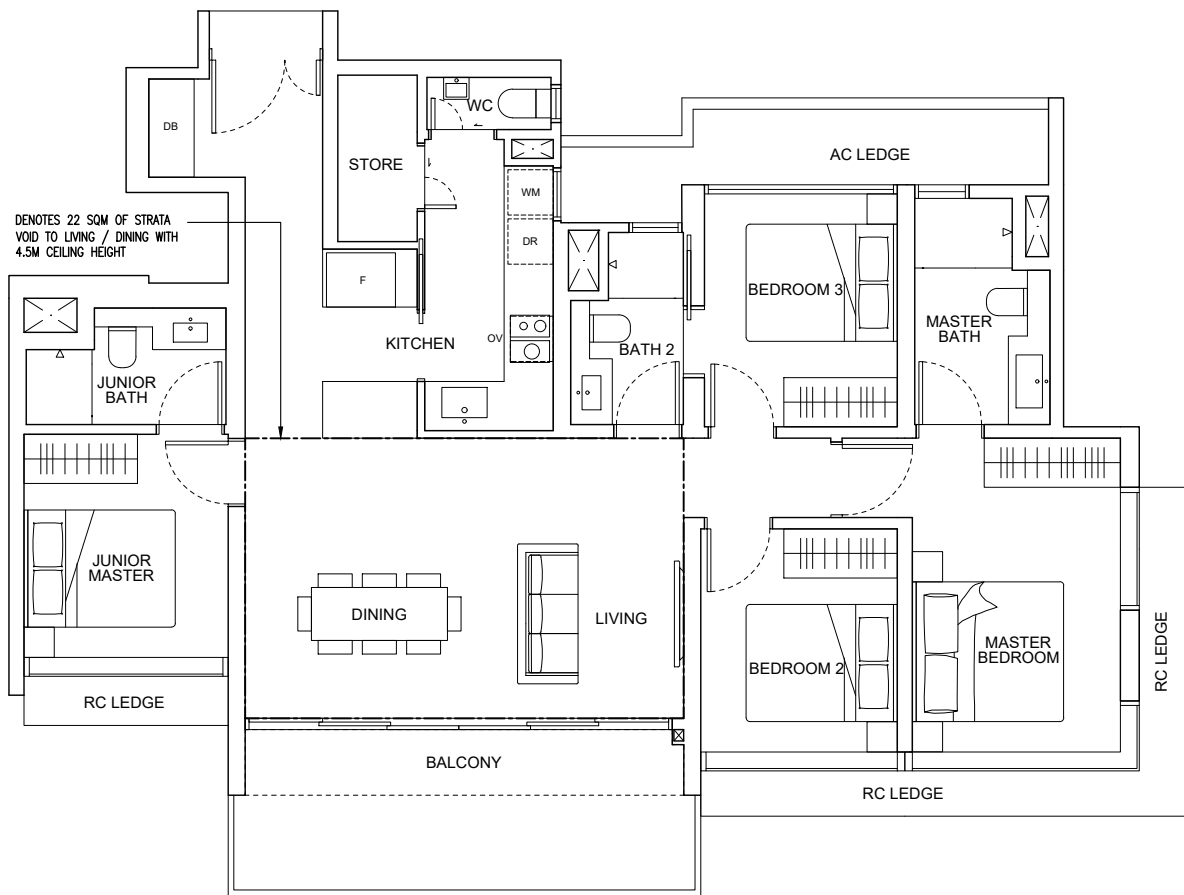




# 4 - BEDROOM TYPE D2(D)

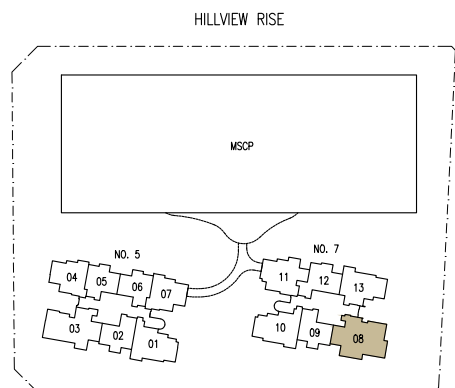
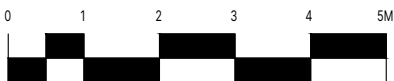
UNITS:  
#28-08

AREA:  
152 SQ.M / 1636 SQ. FT  
(includes 22 sqm of strata void to  
living / dining with 4.5m ceiling height)



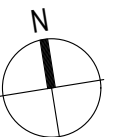
LEGEND:

- DB DISTRIBUTION BOX
- F FRIDGE
- OV OVEN
- WM WASHING MACHINE
- DR DRYER



DISCLAIMER: THE ABOVE PLAN IS SUBJECT TO ANY AMENDMENTS AS MAY BE APPROVED BY THE RELEVANT AUTHORITIES.

KEY PLAN  
THIS KEY PLAN IS NOT TO SCALE







Founded in 1960, Sekisui House, Ltd. is one of world's largest homebuilders and an international diversified developer, with cumulative sales of over 2.6 Million homes. Based in Osaka, Sekisui House has over 300 consolidated subsidiaries and affiliates, over 29,000 employees and is listed on the Tokyo Stock Exchange and Nagoya Stock Exchange.

Sekisui House aims to create homes and communities that improve with time and last for generations. With "Love of Humanity" as its Corporate Philosophy, Sekisui House believes that homes should offer comfort, security and peace of mind for residents, while maintaining harmony with the environment and its surroundings. Sekisui House has sustainability as a core corporate target and is now the global leader in the construction of net-zero-energy houses with more than 70,000 of them built since the product was launched in 2013. In 2009, Sekisui House expanded into several new international markets and now operates in the United States, Australia, China, Singapore and the United Kingdom.

 [sekisuihouse-global.com](http://sekisuihouse-global.com)



Far East Organization is a Christian Enterprise, which develops real estate and operates businesses by serving with grace, love, integrity and honesty. Together with its Hong Kong-based sister company Sino Group, they are one of Asia's largest real estate groups, with operations in Singapore, Malaysia, Australia, Japan, China (Mainland and Hong Kong), Taiwan and USA.

Far East Organization is the largest private property developer in Singapore, having developed over 780 developments across all segments of real estate including 55,000 private homes in Singapore since its establishment in 1960. It includes three listed entities: Far East Orchard Limited, Far East Hospitality Trust and Yeo Hiap Seng Limited.


Far East Organization is the winner of 14 FIABCI World Prix d'Excellence awards, the highest honour in international real estate.


 [fareast.com](http://fareast.com)



Scan for more information

 [fareast.com/hillhaven](https://fareast.com/hillhaven)

 6534 8000

 9712 2344

DISCLAIMER: The information contained herein is subject to change and cannot form part of an offer or contract. While every reasonable care has been taken in providing this information, the developer or its agent cannot be held responsible for any inaccuracies. Whilst we believe the contents of this brochure to be correct and accurate at time of print, they are not to be regarded as statements or representations of fact. Illustrations in the brochure are artist's impressions, which serve only to give an approximate idea of the project. All artist's impressions and all plans are subject to any amendments as may be approved by the relevant authorities. The developer reserves the right to modify any parts of the building prior to project completion as approved or directed by the Planning Authorities or as the owner deems fit in its sole discretion. The developer reserves any and all copyright, design and other proprietary rights in and to this document (or any part thereof) including all or any part of the information, material or artwork contained therein. Unless otherwise expressly agreed to in writing, this document or any part thereof may not be copied, modified, distributed, reproduced or reused without the express written consent of the developer.

Developer: East Residences Pte. Ltd. (202034351G) • Licence No.: C1476 • Tenure: 99 years commencing from 13 February 2023 • Encumbrances: Mortgage No. IH/713736Q in favour of DBS Bank Ltd • Land Description: Lot No. 5170A of MK 10 at Hillview Rise • Expected Vacant Possession Date: 30 June 2028 • Expected Legal Completion Date: 30 June 2031

P1000/1223