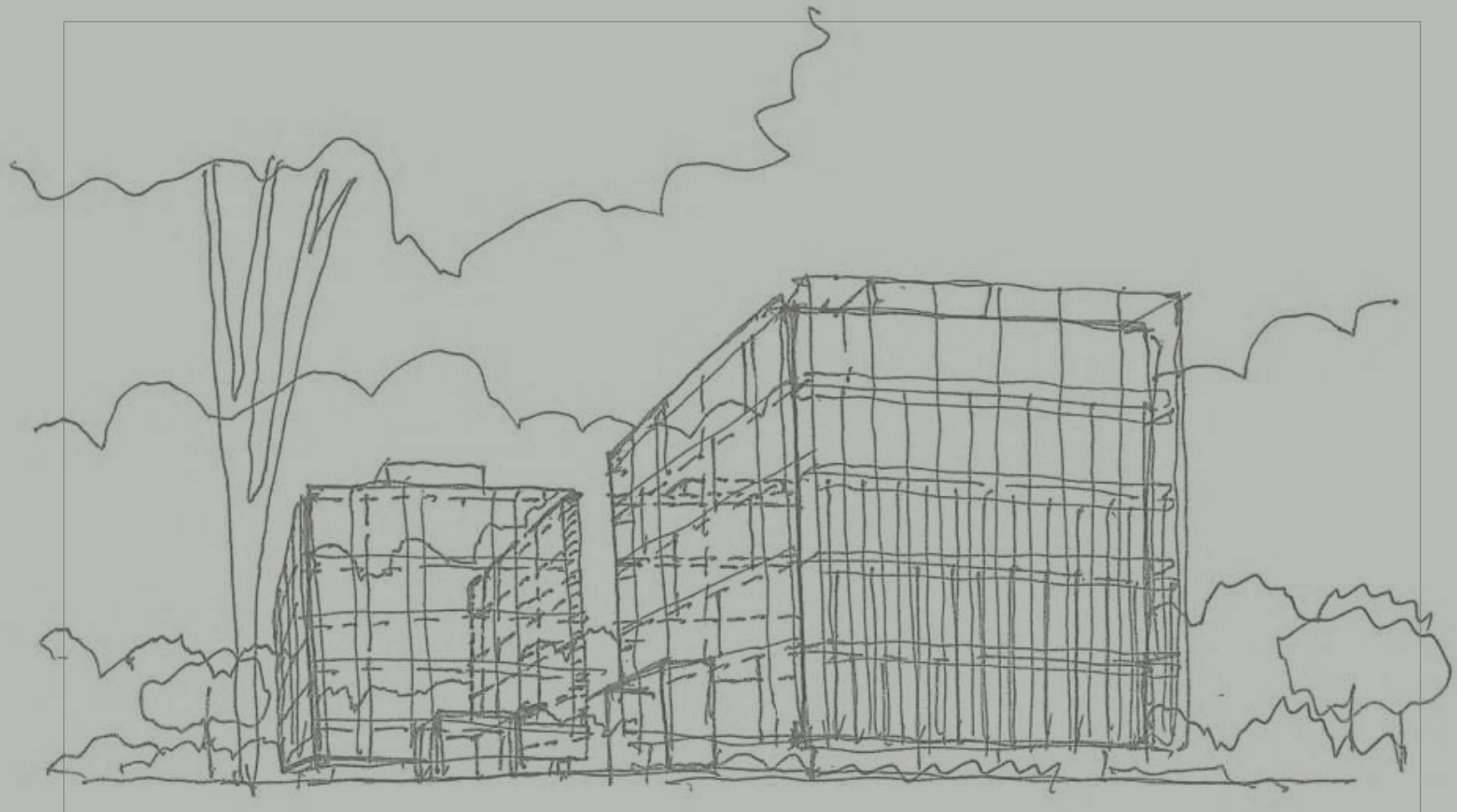


PETIT
JERVOIS



A PETIT
COLLECTIBLE
BY SC GLOBAL





Over the years, we have never let modestly defined spaces limit our creativity. Today, we pay tribute to this original spirit with a new class of luxury homes—Petit Collectibles™.

The First Petit Collectible

2011
Hilltops



2003
Lincoln
Modern



2012
Martin
No.38



Petit Collectibles™ is a natural progression for SC Global, inspired by the success of our smaller luxury residences. The inspiration has driven us to create yet another new concept in luxury living that follows no rules but is anchored by principles that prize thoughtfulness and sharp attention to detail. We are proud and excited about the launch of Petit Collectibles™, which will once again set the tone for truly original luxury living spaces.

Simon Cheong
FOUNDER AND CHAIRMAN
OF SC GLOBAL

“Over the years our apartments have often been referred to as collectibles. Each an original in their own right.”



Rigorously Considered

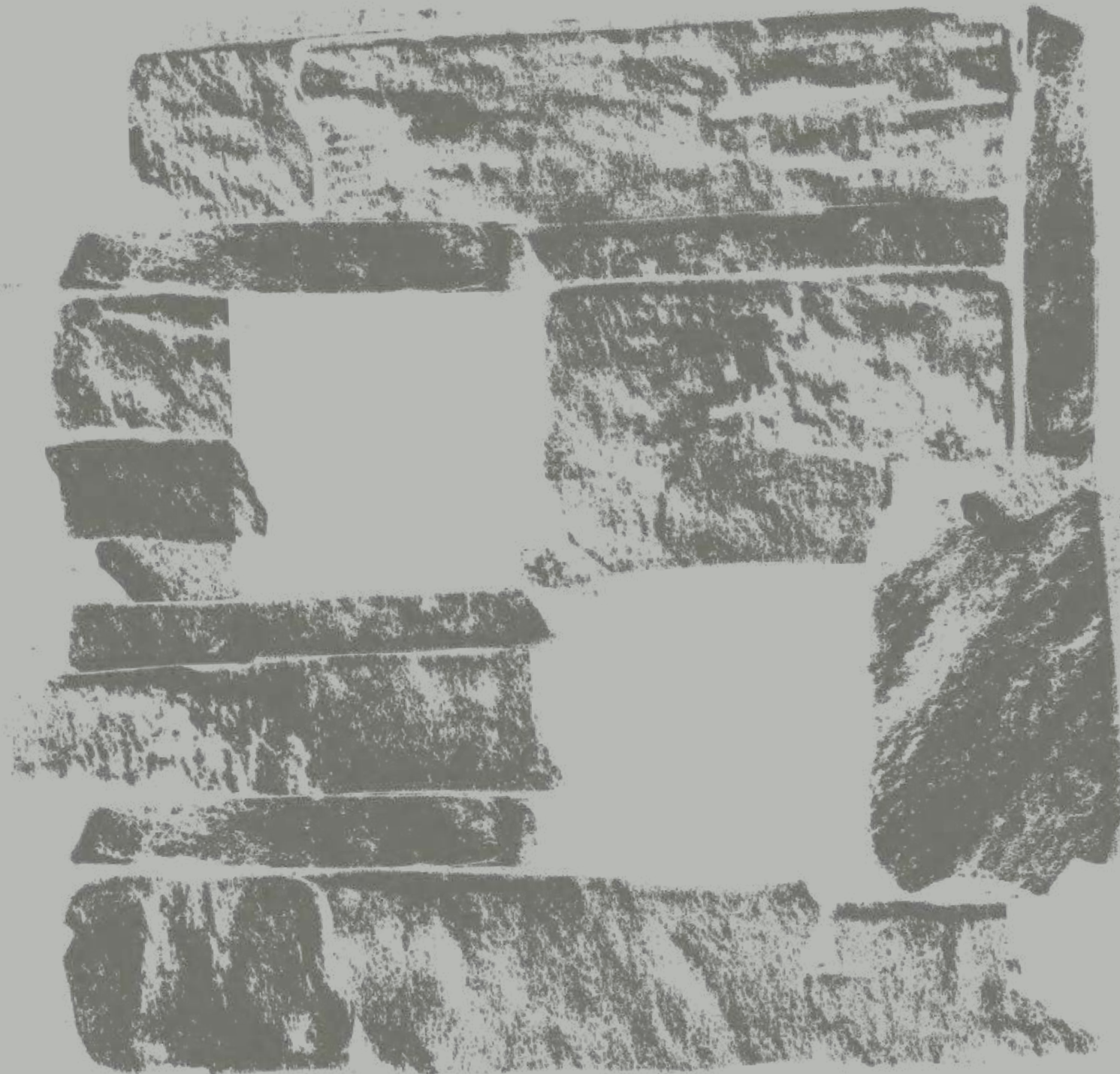


Petit Jervois embodies SC Global's spirit of originality and craftsmanship, where every detail and function is rigorously considered and refined.

It brims with the energy, warmth, and raw beauty of brass, steel, glass and concrete, which shape and define its architectural and living experience.

Here, then, are the rarest of homes, worthy of your unique stamp of quiet, understated elegance. An inviting haven for The Ultimate Living.





A. THE ARCHITECTURE

Carved from Possibilities



Two cubes. Infinite configurations for liveability.

Using a singular block as its conceptual foundation, the architects imagined splitting open this structure to create a pair of pristine cubes. These cubes were then positioned after careful consideration of the tropical climate's vagaries and the surrounding neighbourhood.





The result was low-slung, angular apartment buildings surrounded by baroque-inspired landscaping and two piazza-like spaces, each providing distinctly different experiences.

The first piazza serves as a striking entry point with its sweeping driveway; the rear piazza is a veritable sanctuary, with pockets of quiet spaces for residents to unwind and bask in the tranquil surrounds. Lush greenery encircles a 20-metre swimming pool and an al fresco pool pavilion with fitness equipment — an extension of the Ultimate Living in the natural beauty of the outdoors.



B. THE INTERIOR

Innately Refined



Two Bedroom Apartment

Each living space is anointed with flexible functionality. Walls slide and seemingly vanish, providing residents the luxury of seamless integration and the freedom to design their spaces to suit their lifestyles.

Intricate detailing, the jointing of base metals, and raw concrete finishes capture the grace of urban-industrial design at PETIT JERVOIS.





Two Bedroom Apartment

Tactility was accorded equal importance, with every material carefully chosen so the living environment feels reassuringly warm.

Without doubt, Petit Jervois represents a delightfully unorthodox interpretation of luxury — one that is honest in its simplicity and realised to the highest standards of refinement.

Living well is easy here, as all the elements of a truly welcoming home conspire to provide comfort, retreat and sumptuous intimacy.



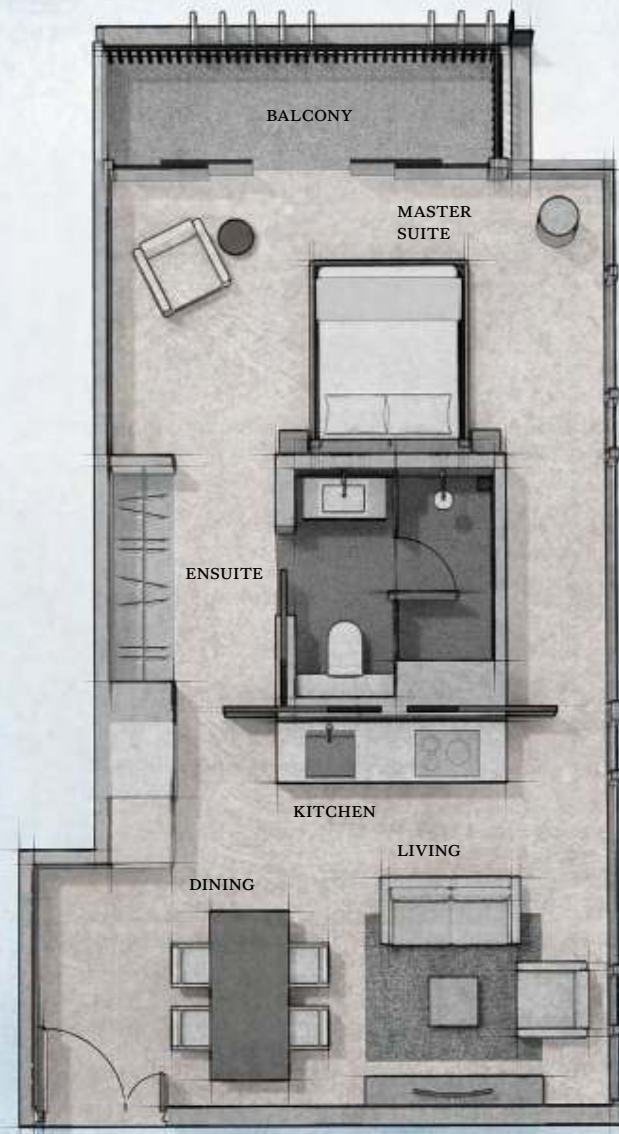
We took inspiration from LUDWIG MIES VAN DER ROHE'S Farnsworth House. Designed in 1945, the concept is based on living space wrapped around the centralised core facilities, giving residents the flexibility of creating their own unique spaces.



— Simon Cheong



One Bedroom Apartment



One Bedroom Apartment

Type A4

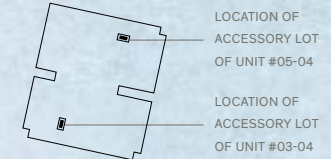
UNIT SIZE

Approx. 59 m² / 635 ft²

UNIT NO.

#03-04, #05-04

BLOCK 1 LOWER ROOF KEY PLAN



Area includes air-con accessory lot and balcony. The balcony shall not be enclosed unless with the approved balcony screen (refer to annexure). Please refer to key plans for orientation. All plans are subject to amendments as may be approved by the relevant authorities. Floor areas are approximate measurements and are subject to final survey. BP Approval No. A1653-17428-2017-BP02 dated 27/07/2018

Two Bedroom Apartment

Type B8

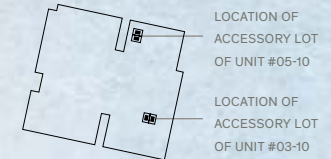
UNIT SIZE

Approx. 93 m² / 1,001 ft²

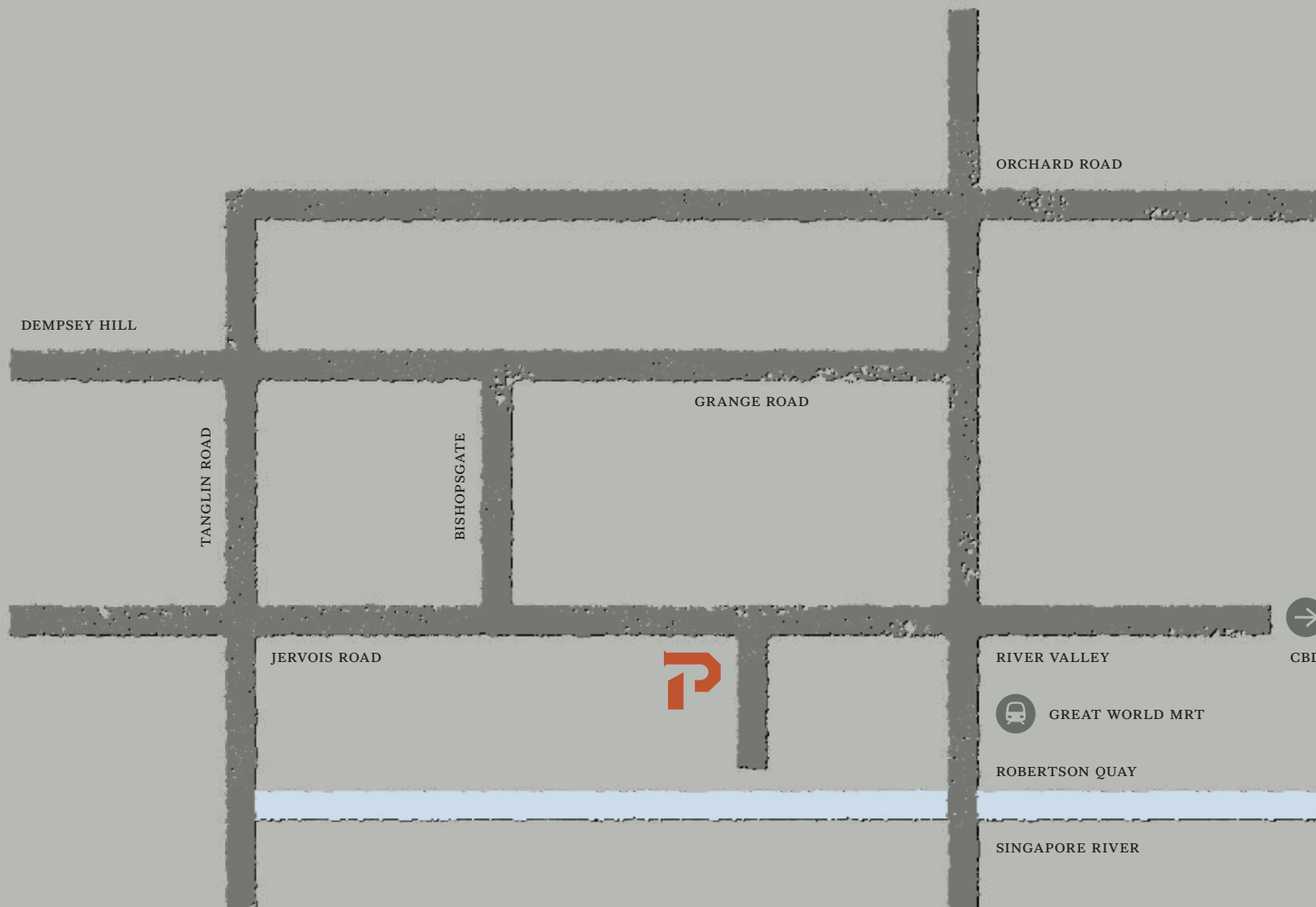
UNIT NO.

#03-10, #05-10

BLOCK 2 LOWER ROOF KEY PLAN



Area includes air-con accessory lot and balcony. The balcony shall not be enclosed unless with the approved balcony screen (refer to annexure). Please refer to key plans for orientation. All plans are subject to amendments as may be approved by the relevant authorities. Floor areas are approximate measurements and are subject to final survey. BP Approval No. A1653-17428-2017-BP02 dated 27/07/2018



C. THE DISTRICT

Closer to Perfection



Cherished for its prime location—close to everything that matters, including the need for privacy.

Discreetly positioned in the leafy perimeters of exclusive Bishopsgate and adjacent to a park connector. You are perfectly situated to enjoy quiet morning runs and bucolic evening strolls.

Hidden away yet in the centre of it all, Petit Jervois provides endless experiences just beyond your doorstep. Only minutes away, take in the charms of gentrified Tiong Bahru, with its bijoux cafes and whimsical stores, or the riverside enclave of Robertson Quay, rich with art galleries and a thriving bar and restaurant scene.



Photo Courtesy of The Warehouse Hotel



ENTERTAINMENT

CINELESURE ORCHARD
CLARKE QUAY
DEMPSEY HILL
NATIONAL MUSEUM OF SINGAPORE
ROBERTSON QUAY
SINGAPORE REPERTORY THEATRE
SINGAPORE TYLER PRINT INSTITUTE
TIONG BAHRU



MEDICAL CENTRES

CAMDEN MEDICAL CENTRE
GLENEAGLES HOSPITAL
MOUNT ELIZABETH MEDICAL CENTRE
PARAGON MEDICAL CENTRE



MRT

DHOBY GHAUT
GREAT WORLD CITY (u/c)
ORCHARD BOULEVARD (u/c)
ORCHARD
SOMERSET
TIONG BAHRU



RETAIL

313@SOMERSET
FORUM THE SHOPPING MALL
GREAT WORLD CITY
HEEREN
ION ORCHARD
MANDARIN GALLERY
ORCHARD CENTRAL
ORCHARD GATEWAY
PARAGON
PLAZA SINGAPURA
SCOTTS SQUARE
SHAW HOUSE
TAKASHIMAYA SHOPPING CENTRE
TANGLIN MALL
THE CENTREPOINT
VALLEY POINT
WHEELLOCK PLACE
WISMA ATRIA



SCHOOLS

ACS JUNIOR SCHOOL
CHATSWORTH INTERNATIONAL SCHOOL
ETONHOUSE INTERNATIONAL PRE-SCHOOL
RIVER VALLEY PRIMARY SCHOOL

Development Summary

SITE AREA

3,162.30 m² /
34,038.71 ft²

DWELLING UNITS

55 Units

NO. OF BLOCKS

2 Blocks

NO. OF STOREYS

5 Storeys (per block)

CAR PARKING LOTS

57 Lots

LOCATION

33 Jervois Road

ARCHITECT

RTNQ
Architects

TENURE

Freehold

DISTRICT

D10

LEGEND

1. Security
2. Residents' Drop-off
3. Swimming Pool
4. Pool Deck
5. Fitness Pavilion



SC Global Milestones

Luxury real estate developer SC Global has established a reputation for innovating original lifestyle concepts and awarding winning architecture, each a careful and considered response to delivering 'The Ultimate Living' experience.



2001

THE LADYHILL

BCA Singapore—
Excellence Award
For Residential
Developments, 2004

Miami+Beach
Biennial International
Awards—Gold Medal
Winner, 2005

Singapore Institute
of Architecture—
Design Award, 2006



2003

LINCOLN MODERN

Royal Institute of British
Architects (Riba)—
International Award, 2005

Singapore Institute of
Architecture Awards—
Honourable Mention, 2006



2003

BLVD



2004

THR3E THRE3 ROBIN

Singapore Institute
of Architecture—
Design Award, 2005



2011

THE MARQ

Singapore Institute of
Architecture Awards—
Honourable Mention 2011



2011

HILLTOPS



2012

MARTIN NO.38

Singapore Institute
of Architecture—
Design Award, 2011

Singapore Institute
of Architecture Awards—
Building of The Year, 2011

World Architecture
Festival—Best Completed
Condominium, 2012

Singapore President's
Design Award, 2012



2013

SEVEN PALMS SENTOSA COVE

Australian Institute of
Architects—International
Architecture Award, 2015



2015

SCULPTURA ARDMORE

PETIT JERVOIS



SALES GALLERY

200 Newton Road

Viewing by appointment only.

ENQUIRIES

+65 6100 2323

Note: All renderings are for
illustration purposes only.

WWW.PETITJERVOIS.COM



Developed by SC Global Developments Pte Ltd
in partnership with Couture Homes Properties Ltd



Own the Original